

BRIGHT-TOOLS

BRIGHT-TOOLS

# TOOL HOLDERS

# BT

BRIGHT-TOOLS

BRIGHT-TOOLS

BRIGHT-TOOLS

BRIGHT-TOOLS

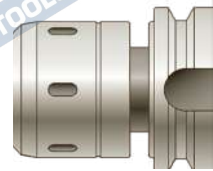
BRIGHT-TOOLS

BRIGHT-TOOLS

## POWER MILLING CHUCK 强力刀柄的工作原理



### High Rigidity 高刚性

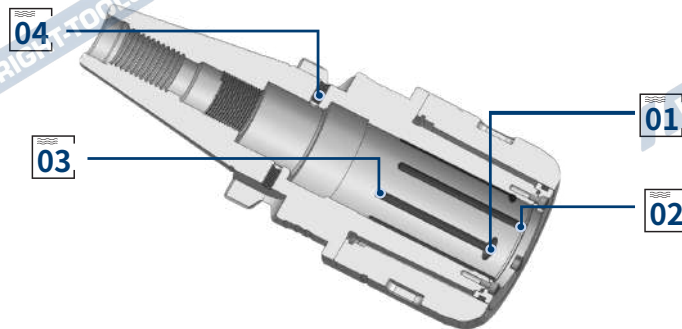


Before Clamping  
装夹刀具前



After Clamping  
装夹刀具后

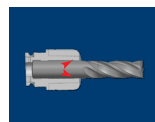
### High clamping force 高夹持力



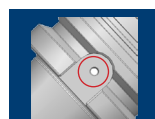
**01** Deep groove High clamping force  
深槽 增加夹紧力



**03** Prevents tool rotation  
防止刀具旋转

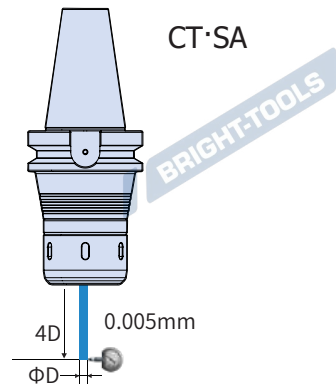
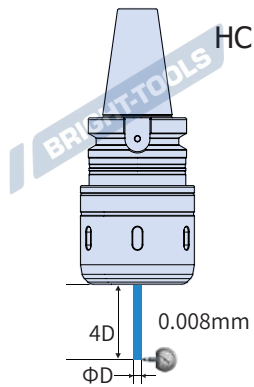


**02** Radial notch, prevents tool from slipping out  
径向槽深, 防止刀具打滑



**04** a ventilation shaft  
排气孔

High precision  
高精度



BT

AD 中心出水



Rough machining  
粗加工

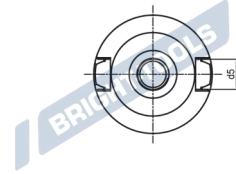
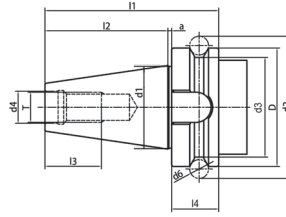
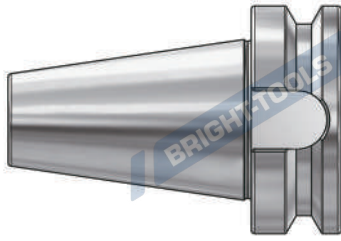
- √ Aerospace machining
- √ Automotive Mould Machining
- √ Energy Equipment Heavy Cutting

- √ 航空航天加工
- √ 汽车模具加工
- √ 能源装备重切削



## BT Taper Standard

### BT 锥柄标准



Size	D	d1	d2	d3	d4	d5	d6	l1	l2	l3	l4	a	T
BT30	46	31.75	56.144	38	12.5	16.1	8	70.4	48.4	24	20	2	M12*1.75
BT40	63	44.45	75.679	53	17	16.1	10	92.4	65.4	30	25	2	M16*2.0
BT50	100	69.85	119.019	85	25	25.7	15	139.8	101.8	45	35	3	M24*3.0

**Taper standard:** JIS B 6339

**Material:** Alloyed case hardened steel

**Surface Treatment:** Blackening and Bright

**Taper tolerance:** <AT3

**Hardness:** HRC 56-60

**Carbon depth:** 0.8±0.2mm

**Surface Roughness:** Ra<0.2µm

**Balancing:** G6.3/15000; G2.5/25000

**Cooling:** AD; AD/B can be made by request.

BRIGHT-TOOLS

BRIGHT-TOOLS

BRIGHT-TOOLS

BRIGHT-TOOLS

## BT TOOLING SYSTEM

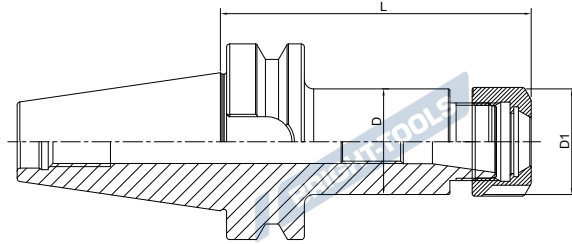
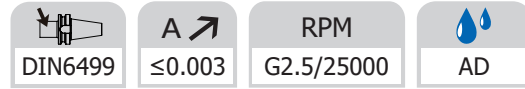
### BT 工具系统

ER Collet Chuck.....	D.06
ER 弹簧夹头刀柄	
ER Collet Chuck,Shrot.....	D.11
ER 弹簧夹头刀柄,超短型	
GER Collet Chuck .....	D.11
GER 弹簧夹头刀柄	
Power Milling Chuck .....	D.12
强力铣刀柄	
OZ Collet C huck.....	D.15
OZ 夹头刀柄	
TG Collet Chuck .....	D.15
TG 超强力刀柄	
SKS Collet Chuck.....	D.16
SKS 高速筒夹刀柄	
Pull Back Collet Chuck .....	D.17
DC 后拉刀柄	
Precision Screw Collet Chuck.....	D.18
NDC 后拉刀柄	
Face Mill Holder.....	D.19
面铣刀柄	
Combi Shell Mill Holder.....	D.23
混合插入式铣刀柄	
End Mill Holder.....	D.24
侧固刀柄	
Morse Taper Adapter.....	D.30
带扁尾莫氏刀柄	
Morse Taper Adapter.....	D.31
带螺纹孔莫氏刀柄	
Tool Holder Adapter Sleeve .....	D.33
转换刀柄	
Drill Chuck Adapter.....	D.33
钻接杆	
APU Drill Chuck Holder .....	D.33
APU 钻夹头刀柄	
Precision Drill Chuck Holder.....	D.34
精密钻夹头刀柄	
Quick Change Tapping Chuck.....	D.36
弹性快换攻丝刀柄	
Screw-in Milling Cutter Holder.....	D.33
SOM 锁牙刀柄	
Runout Adjustable Flange Adapter .....	D.35
可调节精度法兰刀柄	
UM Adjustable.....	D.36
UM调零刀柄	
Boring Bar Blank.....	D.39
基础柄	
Test Arbor.....	D.39
主轴检测棒	
Alignment Tool for ATC Arm .....	D.40
调整机械用手用组合模具	

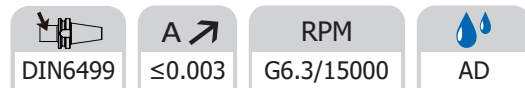


BT

## ER Collet Chuck with UM Nut ER 弹簧夹头刀柄



Size	D	D1	L	Capacity
BT30-ER16UM-70	28	32	70	1-10
BT30-ER20UM-70	34	35	70	1-13
BT30-ER25-70	42	42	70	2-16
BT30-ER32-70	40	50	70	2-20
BT30-ER40-70	50	63	70	3-26
BT30-ER16UM-100	28	32	100	1-10
BT30-ER20UM-100	34	35	100	1-13
BT30-ER25-100	42	42	100	2-16
BT30-ER32-100	40	50	100	2-20
BT40-ER16UM-70	28	32	70	1-10
BT40-ER20UM-70	34	35	70	1-13
BT40-ER25-70	42	42	70	2-16
BT40-ER32-70	50	50	70	2-20
BT40-ER40-80	50	63	80	3-26
BT40-ER16UM-100	28	32	100	1-10
BT40-ER20UM-100	34	35	100	1-13
BT40-ER25-100	42	42	100	2-16
BT40-ER32-100	50	50	100	2-20
BT40-ER40-100	50	63	100	3-26
BT40-ER16UM-160	28	32	160	1-10
BT40-ER20UM-160	34	35	160	1-13
BT40-ER25-160	42	42	160	2-16
BT40-ER32-160	50	50	160	2-20
BT40-ER40-160	50	63	160	3-26



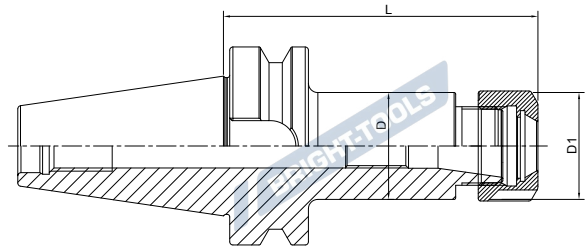
Size	D	D1	L	Capacity
BT40-ER16UM-200	28	32	200	1-10
BT40-ER20UM-200	34	35	200	1-13
BT40-ER25-200	42	42	200	2-16
BT40-ER32-200	50	50	200	2-20
BT40-ER40-200	50	63	200	3-26

AD/B Customized

AD/B 可定制

**ER Collet Chuck with UM Nut**  
**ER 弹簧夹头刀柄**

DIN6499	A $\nearrow$ $\leq 0.003$	RPM G6.3/15000	AD
---------	------------------------------	-------------------	----



Size	D	D1	L	Capacity
BT50-ER16UM-70	28	32	70	1-10
BT50-ER20UM-70	34	35	70	1-13
BT50-ER25-70	42	42	70	2-16
BT50-ER32-70	40	50	70	2-20
BT50-ER40-80	63	63	80	3-26
BT50-ER50-100	64	78	100	6-34
BT50-ER16UM-100	28	32	100	1-10
BT50-ER20UM-100	34	35	100	1-13
BT50-ER25-100	42	42	100	2-16
BT50-ER32-100	50	50	100	2-20
BT50-ER40-100	63	63	100	3-26
BT50-ER16UM-160	28	32	160	1-10
BT50-ER20UM-160	34	35	160	1-13
BT50-ER25-160	42	42	160	2-16
BT50-ER32-160	50	50	160	2-20
BT50-ER40-160	63	63	160	3-26
BT50-ER16UM-200	28	32	200	1-10
BT50-ER20UM-200	34	35	200	1-13
BT50-ER25-200	42	42	200	2-16
BT50-ER32-200	50	50	200	2-20
BT50-ER40-200	63	63	200	3-26
BT50-ER25-250	42	42	250	2-16
BT50-ER32-250	50	50	250	2-20
BT50-ER40-250	63	63	250	3-26
BT50-ER25-300	42	42	300	2-16
BT50-ER32-300	50	50	300	2-20
BT50-ER40-300	63	63	300	3-26

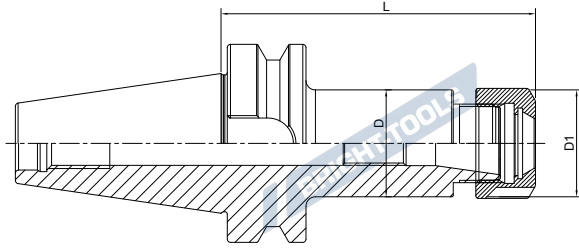
AD/B Customized

AD/B 可定制

BT

### ER Collet Chuck with UM Nut ER 弹簧夹头刀柄

DIN6499	A $\leq 0.003$	RPM G6.3/15000	AD
---------	----------------	-------------------	----



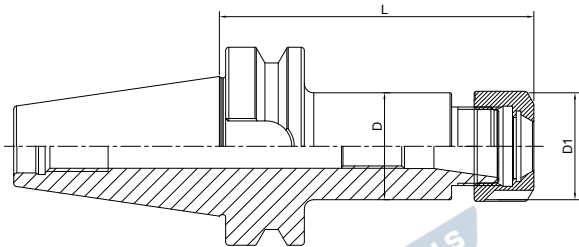
Size	D	D1	L	Capacity
BT60-ER32-100	50	50	100	2-20
BT60-ER40-100	63	63	100	3-26
BT60-ER50-100	64	78	100	6-34
BT60-ER32-160	50	50	160	2-20
BT60-ER40-160	63	63	160	3-26
BT60-ER50-160	64	78	160	6-34

AD/B Customized

AD/B 可定制

### ER Collet Chuck with Hex Nut ER 弹簧夹头刀柄

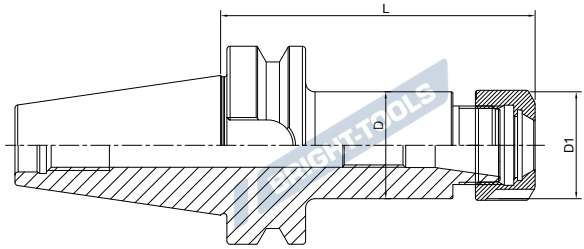
DIN6499	A $\leq 0.003$	RPM G2.5/25000	AD
---------	----------------	-------------------	----



Size	D	D1	L	Capacity
BT30-ER16-70	28	28	70	1-10
BT30-ER20-70	34	34	70	1-13
BT30-ER16-100	28	28	100	1-10
BT30-ER20-100	34	34	100	1-13
BT40-ER16-70	28	28	70	1-10
BT40-ER20-70	34	34	70	1-13
BT40-ER16-100	28	28	100	1-10
BT40-ER20-100	34	34	100	1-13
BT40-ER16-160	28	28	160	1-10
BT40-ER20-160	34	34	160	1-13

**ER Collet Chuck with Hex Nut**  
**ER 弹簧夹头刀柄**

DIN6499	A $\leq 0.003$	RPM G6.3/25000	AD
---------	----------------	-------------------	----



Size	D	D1	L	Capacity
BT40-ER16-200T	28	28	200	1-10
BT40-ER20-200	34	34	200	1-13
BT50-ER16-70	28	28	70	1-10
BT50-ER20-70	34	34	70	1-13
BT50-ER16-100	28	28	100	1-10
BT50-ER20-100	34	34	100	1-13
BT50-ER16-160	28	28	160	1-10
BT50-ER20-160	34	34	160	1-13
BT50-ER16-200T	28	28	200	1-10
BT50-ER20-200	34	34	200	1-13

AD/B Customized  
 T refers to cutter side with taper design

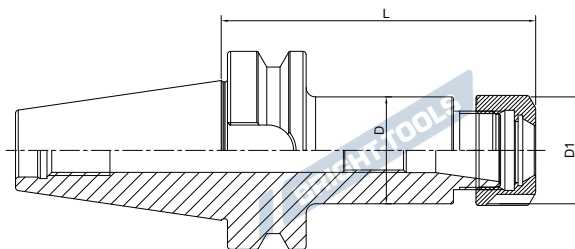
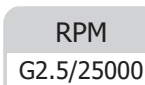
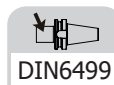
AD/B 可定制  
 T 代表刀具端锥柄设计

**BT**



## ER Collet Chuck with Mini Nut

### ER 弹簧夹头刀柄



Size	D	D1	L	Capacity
BT30-ER11M-70	16	16	70	1-7
BT30-ER16M-70	22	22	70	1-10
BT40-ER11M-70	16	16	70	1-7
BT40-ER16M-70	22	22	70	1-10
BT40-ER20M-70	28	28	70	1-13
BT40-ER25M-70	35	35	70	2-16
BT40-ER11M-100	16	16	100	1-7
BT40-ER16M-100	22	22	100	1-10
BT40-ER20M-100	28	28	100	1-13
BT40-ER25M-100	35	35	100	2-16
BT40-ER11M-160T	16	16	160	1-7
BT40-ER16M-160T	22	22	160	1-10
BT40-ER20M-160	28	28	160	1-13
BT40-ER25M-160	35	35	160	2-16

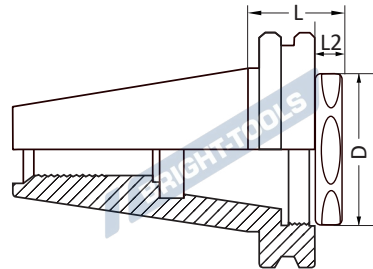
Size	D	D1	L	Capacity
BT50-ER16M-100	22	22	100	1-10
BT50-ER20M-100	28	28	100	1-13
BT50-ER25M-100	35	35	100	2-16
BT50-ER16M-160T	22	22	160	1-10
BT50-ER20M-160	28	28	160	1-13
BT50-ER25M-160	35	35	160	2-16

AD/B Customized  
T refers to cutter side with taper design

AD/B 可定制  
T 代表刀具端锥柄设计

**ER Collet Chuck, Shrot**  
**ER 弹簧夹头刀柄, 超短型**

DIN6499	A $\nearrow$ $\leq 0.003$	RPM G2.5/25000	AD
---------	------------------------------	-------------------	----

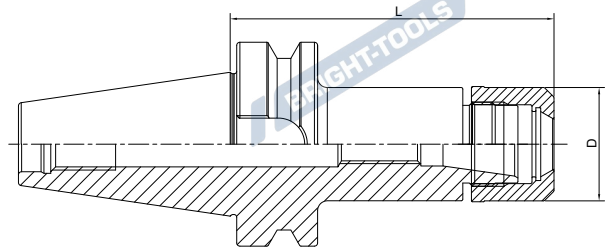


Size	D	L	L1
BT40-ER25-36	29.5	36	9
BT40-ER32-36	37.5	36	9

BT

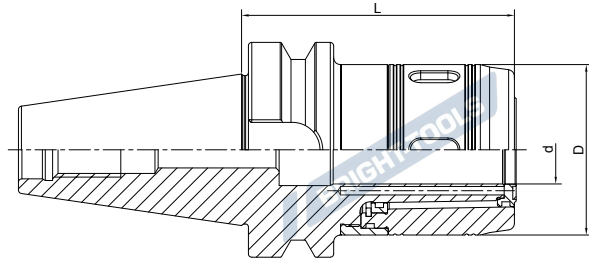
**ER Collet Chuck with GER Nut**  
**ER 弹簧夹头刀柄**

DIN6499	A $\nearrow$ $\leq 0.003$	RPM G2.5/25000	AD
---------	------------------------------	-------------------	----



Size	D	L	Capacity
BT30-GER16-70	30	70	1-10
BT30-GER20-70	35	70	1-13
BT30-GER25-70	40	70	2-16
BT30-GER32-70	48	70	2-20
BT40-GER16-70	30	70	1-10
BT40-GER20-70	35	70	1-13
BT40-GER25-70	40	70	2-16
BT40-GER32-70	48	70	2-20
BT40-GER16-100	30	100	1-10
BT40-GER20-100	35	100	1-13
BT40-GER25-100	40	100	2-16
BT40-GER32-100	48	100	2-20
BT50-GER16-100	30	100	1-10
BT50-GER20-100	35	100	1-13
BT50-GER25-100	40	100	2-16
BT50-GER32-100	48	100	2-20

## Power Milling Chuck 强力铣刀柄


**BT**

Size	d	D	L	Capacity
BT30-HC20-80	20	50	80	3-16; 20
BT30-HC25-90	25	59	90	3-20; 25
BT30-HC32-110	32	72	110	3-25; 32
BT40-HC20-90	20	50	90	3-16; 20
BT40-HC25-100	25	59	100	3-20; 25
BT40-HC32-90	32	72	90	3-25; 32
BT40-HC32-105	32	72	105	3-25; 32
BT40-HC32-165	32	72	165	3-25; 32
BT40-HC42-130	42	99	130	3-32; 42
BT50-HC20-105	20	50	105	3-16; 20
BT50-HC25-105	25	59	105	3-20; 25
BT50-HC32-110	32	72	110	3-25; 32
BT50-HC42-110	42	99	110	3-32; 42
BT50-HC32-165	32	72	165	3-25; 32
BT50-HC32-200	32	72	200	3-25; 32
BT50-HC32-250	32	72	250	3-25; 32
BT50-HC32-300	32	72	300	3-25; 32
BT60-HC32-130	32	72	130	3-25; 32
BT60-HC42-130	42	99	130	3-32; 42

**Power Milling Chuck**  
**强力铣刀柄**

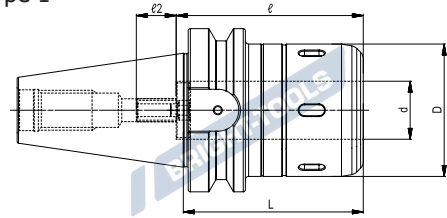
**NEW**

A ↗  
 ≤0.005

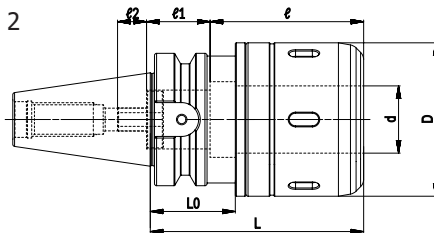
AD



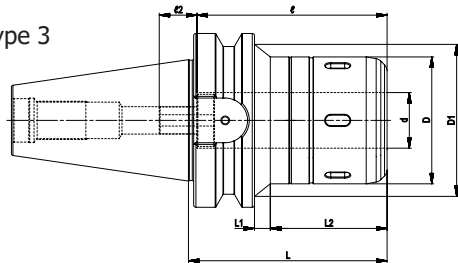
Type 1



Type 2



Type 3



Size	Type	d	D	D1	L	L1	L2	ℓ	ℓ1	ℓ2	d1	L0	G
BT30-CT16SA-90	1	16	45	-	90	-	-	65	-	15	-	-	M10
BT30-CT20SA-90	2	20	52	-	90	-	-	80	-	15	-	40	M12
BT30-CT25SA-90	2	25	61	-	90	-	-	80	-	15	-	31	M12
BT40-CT16SA-90	1	16	45	-	90	-	-	65	-	15	-	-	M10
BT40-CT20SA-90	1	20	52	-	90	-	-	80	-	15	-	-	M12
BT40-CT25SA-90	1	25	61	-	90	-	-	80	-	15	-	-	M12
BT40-CT25SA-105	1	25	61	-	105	-	-	80	-	15	-	-	M12
BT40-CT32SA-90	2	32	73	-	90	-	-	76	32	17	26	31	M18
BT40-CT32SA-105	2	32	73	-	105	-	-	85	23	17	26	44	M18
BT40-CT32SA-135	2	32	73	-	135	-	-	120	-	17	-	69	M18

BT

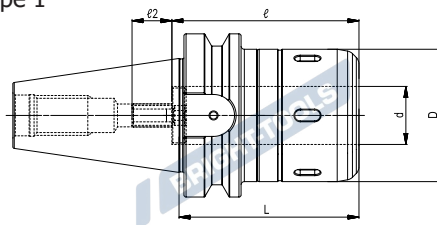
# Power Milling Chuck 强力铣刀柄

**NEW**

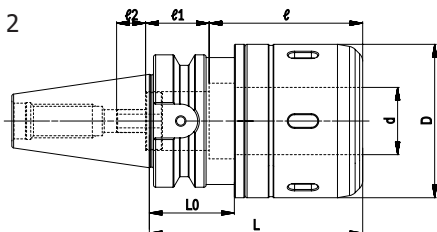
A ↗	AD
≤0.005	



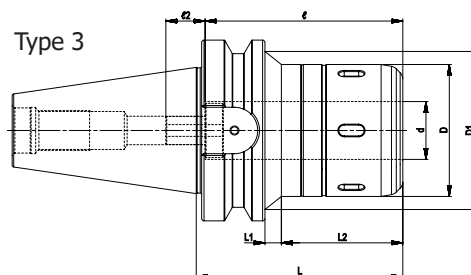
Type 1



Type 2



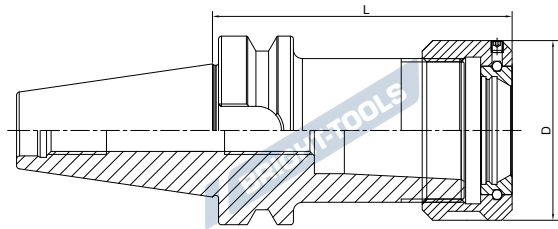
Type 3



Size	Type	d	D	D1	L	L1	L2	ℓ	ℓ1	ℓ2	d1	L0	G
BT50-CT16SA-90	3	16	45	58	90	7	45	65	-	20	-	-	M10
BT50-CT20SA-90	3	20	52	65	90	7	45	80	-	15	-	-	M12
BT50-CT20SA-105	3	20	52	70	105	9	58	80	-	15	-	-	M12
BT50-CT20SA-135	3	20	52	73	135	39	58	80	-	15	-	-	M12
BT50-CT20SA-165	3	20	52	73	165	69	58	80	-	15	-	-	M12
BT50-CT25SA-105	3	25	61	82	105	11	56	80	-	15	-	-	M12
BT50-CT25SA-135	3	25	61	83	135	41	56	80	-	15	-	-	M12
BT50-CT25SA-165	3	25	61	86	165	71	56	80	-	15	-	-	M12
BT50-CT32SA-110	1	32	73	-	110	-	-	120	-	20	-	-	M18
BT50-CT32SA-135	3	32	73	88	135	41	56	120	-	20	-	-	M18
BT50-CT32SA-165	3	32	73	86	165	71	56	120	-	20	-	-	M18
BT50-CT32SA-200	3	32	73	88	200	106	56	120	-	20	-	-	M18
BT50-CT32SA-250	3	32	73	88	250	156	56	120	-	20	-	-	M18
BT50-CT32SA-300	3	32	73	88	300	206	56	120	-	20	-	-	M18
BT50-CT32SA-350	3	32	73	88	350	256	56	120	-	20	-	-	M18
BT50-CT32SA-400	3	32	73	88	400	306	56	120	-	20	-	-	M18
BT50-CT32SA-450	3	32	73	88	450	356	56	120	-	20	-	-	M18
BT50-CT42SA-105	1	42	88	-	105	-	-	120	-	20	-	-	M18
BT50-CT42SA-135	1	42	88	-	135	-	-	120	-	20	-	-	M18
BT50-CT42SA-165	1	42	88	-	165	-	-	120	-	20	-	-	M18
BT50-CT42SA-200	1	42	88	-	200	-	-	120	-	20	-	-	M18
BT50-CT42SA-250	1	42	88	-	250	-	-	120	-	20	-	-	M18
BT50-CT42SA-300	1	42	88	-	300	-	-	120	-	20	-	-	M18
BT60-CT32SA-135	3	32	73	88	135	31	56	120	-	20	-	-	M18
BT60-CT42SA-135	3	42	88	110	135	31	56	120	-	20	-	-	M18

**OZ Collet Chuck**  
**OZ 夹头刀柄**

DIN6391	A $\leq 0.005$	RPM G6.3/15000	AD
---------	----------------	----------------	----

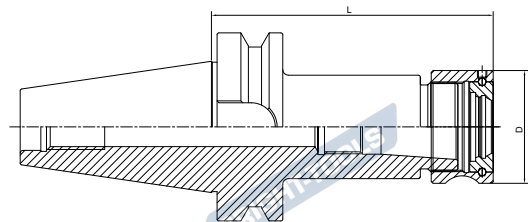


Size	D	L	Capacity
BT30-OZ16-70	43	70	3-16
BT30-OZ25-80	60	80	3-25
BT40-OZ16-70	43	70	3-16
BT40-OZ25-70	60	70	3-25
BT40-OZ32-80	72	80	6-32
BT50-OZ25-85	60	85	3-25
BT50-OZ32-90	72	90	6-32

BT

**TG Collet Chuck**  
**TG 超强力刀柄**

A $\leq 0.005$	RPM G2.5/25000	AD
----------------	----------------	----

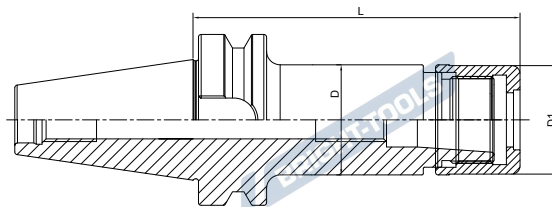


Size	D	L	Collet	Capacity
BT40-TG75-70	50	70	TG 75	2-20
BT40-TG100-80	60	80	TG 100	3-25
BT40-TG100-100	60	100	TG 100	3-25
BT40-TG100-150	60	150	TG 100	3-25
BT50-TG100-90	60	90	TG 100	3-25
BT50-TG100-150	60	150	TG 100	3-25

## High Speed SKS Collet Chuck

### SKS 高速筒夹刀柄

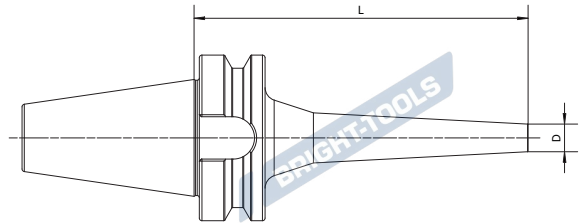
A ↗ ≤0.003	RPM G2.5/25000	AD
---------------	-------------------	----



Size	D	D1	L	Capacity	M
BT30-SKS10-60	27.5	27	60	2-10	M21.5*1
BT30-SKS16-60	40.6	40	60	3-16	M32*1.5
BT30-SKS10-90	27.5	27	90	2-10	M21.5*1
BT30-SKS16-90	40.6	40	90	3-16	M32*1.5
BT40-SKS10-60	27.5	27	60	2-10	M21.5*1
BT40-SKS16-70	40.6	40	70	3-16	M32*1.5
BT40-SKS10-90	27.5	27	90	2-10	M21.5*1
BT40-SKS16-90	40.6	40	90	3-16	M32*1.5
BT40-SKS20-90	48.5	48	90	2-20	M40*1
BT40-SKS25-90	55.6	55	90	6-25	M45*1.5
BT40-SKS10-120	27.5	27	120	2-10	M21.5*1
BT40-SKS16-120	40.6	40	120	3-16	M32*1.5
BT40-SKS20-120	48.5	48	120	2-20	M40*1
BT40-SKS25-120	55.6	55	120	6-25	M45*1.5
BT50-SK10-100	27.5	27	100	2-10	M21.5*1
BT50-SK16-100	40.6	40	100	3-16	M32*1.5
BT50-SKS10-120	27.5	27	120	2-10	M21.5*1
BT50-SKS16-120	40.6	40	120	3-16	M32*1.5
BT50-SKS10-165	27.5	27	165	2-10	M21.5*1
BT50-SKS16-165	40.6	40	165	3-16	M32*1.5

**Pull Back Collet Chuck**  
**DC 后拉刀柄**

A ↗ ≤0.003	RPM G2.5/25000	AD
---------------	-------------------	----



Size	L	D	Capacity
BT30-DC06-60	60	14	1-6
BT30-DC06-90	90	14	1-6
BT30-DC06-120	120	14	1-6
BT30-DC08-60	60	22	1-10
BT30-DC08-90	90	22	1-10
BT30-DC08-120	120	22	1-10
BT30-DC12-80	80	34	1-12
BT40-DC06-60	60	14	1-6
BT40-DC06-90	90	14	1-6
BT40-DC06-120	120	14	1-6
BT40-DC06-150	150	14	1-6
BT40-DC08-60	60	22	1-10
BT40-DC08-90	90	22	1-10
BT40-DC08-120	120	22	1-10
BT40-DC08-150	150	22	1-10
BT40-DC08-200	200	22	1-10
BT40-DC12-90	90	34	1-12
BT40-DC12-120	120	34	1-12
BT40-DC12-150	150	34	1-12
BT40-DC12-200	200	34	1-12
BT50-DC06-120	120	14	1-6
BT50-DC06-150	150	14	1-6
BT50-DC08-120	120	22	1-10
BT50-DC08-150	150	22	1-10
BT50-DC08-200	200	22	1-10
BT50-DC12-120	120	34	1-12
BT50-DC12-150	150	34	1-12
BT50-DC12-200	200	34	1-12

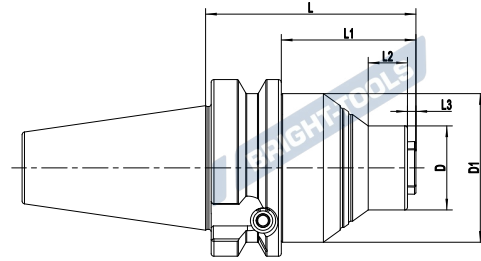
**BT**

## Precision Screw Collet Chuck NDC 后拉刀柄

A ↗  
≤0.003

RPM  
G2.5/25000

AD



Size	D	D1	L	L1	L2	L3
BT30-NDC14-95	30	53	95	48	14	3
BT30-NDC14-140	30	53	140	93	59	3
BT30-NDC20-95	40	53	95	48	16	3
BT40-NDC14-75	30	53	75	48	14	3
BT40-NDC14-120	30	53	120	93	59	3
BT40-NDC20-75	40	63	75	48	16	3
BT40-NDC20-120	40	63	120	93	65	3
BT40-NDC32-115	63	63	115	88	84.5	3.5
BT50-NDC20-130	55	70	130	92	73	3
BT50-NDC32-150	70	70	150	112	108.5	3.5

BRIGHT-TOOLS

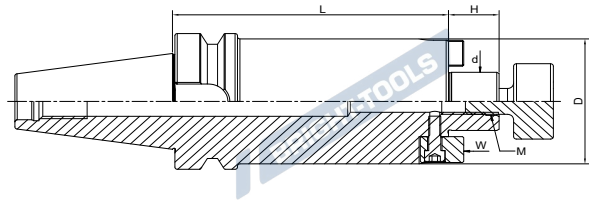
BRIGHT-TOOLS

BRIGHT-TOOLS

BRIGHT-TOOLS

Face Mill Holder Inch  
英制面铣刀柄

A ↗ ≤0.005	RPM G6.3/15000	AD
---------------	-------------------	----

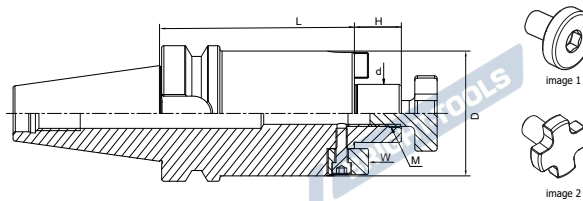
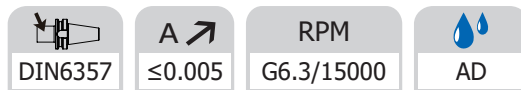


BT

Size	d	L	D	H	M
BT40-FMA3/4"-40	3/4"	40	42.926	17.45	3/8-24
BT40-FMA1"-40	1"	40	55.626	17.45	1/2-20
BT40-FMA1-1/4"-50	1-1/4"	50	69.85	17.45	5/8-18
BT40-FMA1-1/2"-50	1-1/2"	50	78	23.83	3/4-16
BT40-FMA3/4"-100	3/4"	100	42.926	17.45	3/8-24
BT40-FMA1"-100	1"	100	55.626	17.45	1/2-20
BT40-FMA1-1/4"-100	1-1/4"	100	69.85	17.45	5/8-18
BT40-FMA1-1/2"-100	1-1/2"	100	78	23.83	3/4-16
BT40-FMA3/4"-150	3/4"	150	42.926	17.45	3/8-24
BT40-FMA1"-150	1"	150	55.626	17.45	1/2-20
BT40-FMA1-1/4"-150	1-1/4"	150	69.85	17.45	5/8-18
BT40-FMA1-1/2"-150	1-1/2"	150	78	23.83	3/4-16
BT50-FMA3/4"-40	3/4"	40	42.926	17.45	3/8-24
BT50-FMA1"-40	1"	40	55.626	17.45	1/2-20
BT50-FMA1-1/4"-50	1-1/4"	50	69.85	17.45	5/8-18
BT50-FMA1-1/2"-50	1-1/2"	50	78	23.83	3/4-16
BT50-FMA3/4"-100	3/4"	100	42.926	17.45	3/8-24
BT50-FMA1"-100	1"	100	55.626	17.45	1/2-20
BT50-FMA1-1/4"-100	1-1/4"	100	69.85	17.45	5/8-18
BT50-FMA1-1/2"-100	1-1/2"	100	78	23.83	3/4-16
BT50-FMA3/4"-150	3/4"	150	42.926	17.45	3/8-24
BT50-FMA1"-150	1"	150	55.626	17.45	1/2-20
BT50-FMA1-1/4"-150	1-1/4"	150	69.85	17.45	5/8-18
BT50-FMA1-1/2"-150	1-1/2"	150	78	23.83	3/4-16



## Face Mill Holder 面铣刀柄



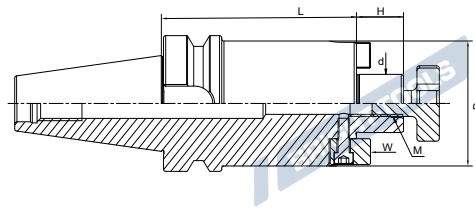
Size	d	L	D	H	M
BT30-FMB16-40	16	40	38	17	M8
BT30-FMB22-40	22	40	48	19	M10
BT30-FMB27-40	27	40	58	21	M12
BT30-FMB32-50	32	50	78	24	M16
BT40-FMB16-40	16	40	38	17	M8
BT40-FMB22-40	22	40	48	19	M10
BT40-FMB27-40	27	40	58	21	M12
BT40-FMB32-50	32	50	78	24	M16
BT40-FMB22-60	22	60	48	19	M10
BT40-FMB27-60	27	60	58	21	M12
BT40-FMB32-60	32	60	78	24	M16
BT40-FMB16-100	16	100	38	17	M8
BT40-FMB22-100	22	100	48	19	M10
BT40-FMB27-100	27	100	58	21	M12
BT40-FMB32-100	32	100	78	24	M16
BT40-FMB16-160	16	160	38	17	M8
BT40-FMB22-160	22	160	48	19	M10
BT40-FMB27-160	27	160	58	21	M12
BT40-FMB32-160	32	160	78	24	M16
BT40-FMB40-160	40	160	88	27	M20
BT40-FMB22-200	22	200	48	19	M10
BT40-FMB27-200	27	200	58	21	M12
BT40-FMB32-200	32	200	78	24	M16
BT40-FMB22-250	22	250	48	19	M10
BT40-FMB22-300	22	300	48	19	M10

Face mill holder is with retaining screw (image 2) except China, it is with universal screw (image 1) in China.  
中国市场面铣刀柄标配圆头螺钉 (图 1), 其他国家标配十字花螺钉 (图 2).

AD/B Customized  
AD/B 可定制

**Face Mill Holder**  
面铣刀柄

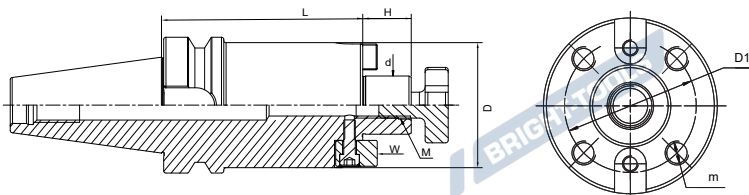
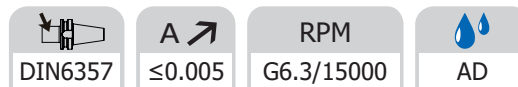
DIN6357	A $\nearrow$ $\leq 0.005$	RPM G6.3/15000	AD
---------	------------------------------	-------------------	----



Size	d	L	D	H	M
BT50-FMB16-40	16	40	38	17	M8
BT50-FMB22-40	22	40	48	19	M10
BT50-FMB27-40	27	40	58	21	M12
BT50-FMB32-50	32	50	78	24	M16
BT50-FMB22-60	22	60	48	19	M10
BT50-FMB27-60	27	60	58	21	M12
BT50-FMB32-60	32	60	78	24	M16
BT50-FMB16-100	16	100	38	17	M8
BT50-FMB22-100	22	100	48	19	M10
BT50-FMB27-100	27	100	58	21	M12
BT50-FMB32-100	32	100	78	24	M16
BT50-FMB22-160	22	160	48	19	M10
BT50-FMB27-160	27	160	58	21	M12
BT50-FMB32-160	32	160	78	24	M16
BT50-FMB22-200	22	200	48	19	M10
BT50-FMB27-200	27	200	58	21	M12
BT50-FMB32-200	32	200	78	24	M16
BT50-FMB22-250	22	250	48	19	M10
BT50-FMB27-250	27	250	58	21	M12
BT50-FMB32-250	32	250	78	24	M16
BT50-FMB22-300	22	300	48	19	M10
BT50-FMB27-300	27	300	58	21	M12
BT50-FMB32-300	32	300	78	24	M16
BT50-FMB22-100	22	100	60	19	M10
BT50-FMB22-150	22	150	60	19	M10
BT50-FMB22-200	22	200	60	19	M10
BT50-FMB22-250	22	250	60	19	M10
BT50-FMB22-300	22	300	60	19	M10
BT60-FMB22-100	22	100	48	19	M10
BT60-FMB27-100	27	100	58	21	M12
BT60-FMB32-100	32	100	78	24	M16
BT60-FMB22-160	22	160	48	19	M10

BT

## Face Mill Holder 面铣刀柄



Size	d	L	D	D1	H	M	m
BT40-FMB40-50	40	50	88	66.7	27	M20	M12
BT40-FMB40-60	40	60	88	66.7	27	M20	M12
BT40-FMB40-100	40	100	88	66.7	27	M20	M12
BT40-FMB40-200	40	200	88	66.7	27	M20	M12
BT50-FMB40-50	40	50	88	66.7	27	M20	M12
BT50-FMB40-60	40	60	88	66.7	27	M20	M12
BT50-FMB60-75	60	75	129	101.6	25	M30	M16
BT50-FMB40-100	40	100	88	66.7	27	M20	M12
BT50-FMB40-160	40	160	88	66.7	27	M20	M12
BT50-FMB40-200	40	200	88	66.7	27	M20	M12
BT50-FMB40-250	40	250	88	66.7	27	M20	M12
BT50-FMB40-300	40	300	88	66.7	27	M20	M12
BT60-FMB40-100	40	100	88	66.7	27	M20	M12
BT60-FMB60-75	60	75	129	101.6	25	M30	M16

FMB40 tool holder is with one retaining screw (image 2) . but it is with one universal screw (image 1) in China.

FMB40 刀柄中国市场面铣刀柄标配圆头螺钉 (图 1)，其他国家标配十字花螺钉 (图 2)。

FMB60 tool holder with 4 cap screws only.

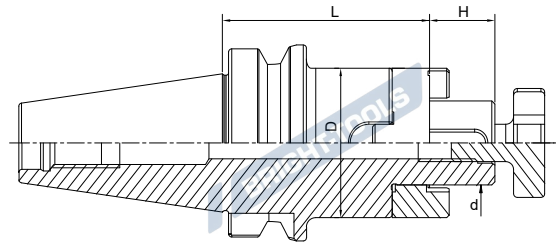
FMB60 刀柄标配 4 个内六角螺钉。

AD/B Customized

AD/B 可定制

**Combi Shell Mill Holder**  
混合插入式铣刀柄

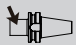
DIN6358	A $\leq 0.005$	RPM G6.3/15000	AD
---------	----------------	----------------	----

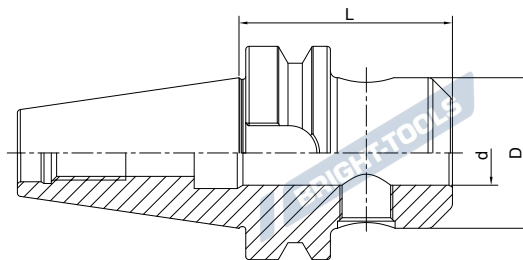


Size	d	D	H	L
BT40-SEMC16-55	16	32	17	55
BT40-SEMC22-55	22	40	19	55
BT40-SEMC27-55	27	48	21	55
BT40-SEMC32-60	32	58	24	60
BT40-SEMC40-60	40	70	27	60
BT40-SEMC16-100	16	32	17	100
BT40-SEMC22-100	22	40	19	100
BT40-SEMC27-100	27	48	21	100
BT40-SEMC32-100	32	58	24	100
BT40-SEMC40-100	40	70	27	100
BT40-SEMC16-160	16	32	17	160
BT40-SEMC22-160	22	40	19	160
BT40-SEMC27-160	27	48	21	160
BT40-SEMC32-160	32	58	24	160
BT40-SEMC40-160	40	70	27	160
BT50-SEMC16-70	16	32	17	70
BT50-SEMC22-70	22	40	19	70
BT50-SEMC27-70	27	48	21	70
BT50-SEMC32-70	32	58	24	70
BT50-SEMC40-70	40	70	27	70
BT50-SEMC16-100	16	32	17	100
BT50-SEMC22-100	22	40	19	100
BT50-SEMC27-100	27	48	21	100
BT50-SEMC32-100	32	58	24	100
BT50-SEMC40-100	40	70	27	100
BT50-SEMC16-160	16	32	17	160
BT50-SEMC22-160	22	40	19	160
BT50-SEMC27-160	27	48	21	160
BT50-SEMC32-160	32	58	24	160
BT50-SEMC40-160	40	70	27	160

BT

## End Mill Holder Weldon 侧固刀柄

 DIN6359/1835B	 A $\nearrow$ $\leq 0.005$	 RPM G6.3/15000	 AD
--	---	--	---



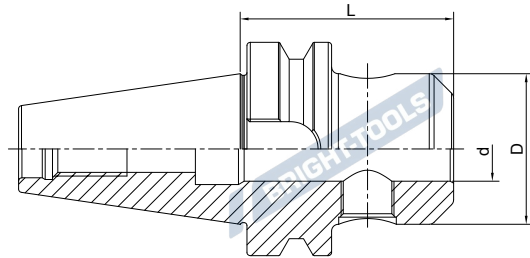
Size	d	D	L	M	Screw Quantity
BT30-SLA06-50	6	25	50	M6	1
BT30-SLA08-50	8	28	50	M8	1
BT30-SLA10-50	10	35	50	M10	1
BT30-SLA12-50	12	42	50	M12	1
BT30-SLA14-50	14	44	50	M12	1
BT30-SLA16-63	16	48	63	M14	1
BT30-SLA18-63	18	50	63	M14	1
BT30-SLA20-63	20	52	63	M16	1
BT30-SLA25-90	25	65	90	M18*2	2
BT40-SLA06-50	6	25	50	M6	1
BT40-SLA08-50	8	28	50	M8	1
BT40-SLA10-63	10	35	63	M10	1
BT40-SLA12-63	12	42	63	M12	1
BT40-SLA14-63	14	44	63	M12	1
BT40-SLA16-63	16	48	63	M14	1
BT40-SLA18-63	18	50	63	M14	1
BT40-SLA20-63	20	52	63	M16	1
BT40-SLA25-90	25	65	90	M18*2	2
BT40-SLA32-100	32	72	100	M20*2	2
BT40-SLA40-120	40	80	120	M20*2	2
BT40-SLA06-100	6	25	100	M6	1
BT40-SLA08-100	8	28	100	M8	1
BT40-SLA10-100	10	35	100	M10	1
BT40-SLA12-100	12	42	100	M12	1
BT40-SLA14-100	14	44	100	M12	1
BT40-SLA16-100	16	48	100	M14	1
BT40-SLA18-100	18	50	100	M14	1
BT40-SLA20-100	20	52	100	M16	1

AD/B Customized

AD/B 可定制

**End Mill Holder Weldon**  
侧固刀柄

DIN6359/1835B	A $\nearrow$ $\leq 0.005$	RPM G6.3/15000	AD
---------------	------------------------------	-------------------	----



Size	d	D	L	M	Screw Quantity
BT40-SLA06-160	6	25	160	M6	1
BT40-SLA08-160	8	28	160	M8	1
BT40-SLA10-160	10	35	160	M10	1
BT40-SLA12-160	12	42	160	M12	1
BT40-SLA14-160	14	44	160	M12	1
BT40-SLA16-160	16	48	160	M14	1
BT40-SLA18-160	18	50	160	M14	1
BT40-SLA20-160	20	52	160	M16	1
BT40-SLA25-160	25	65	160	M18*2	2
BT40-SLA32-160	32	72	160	M20*2	2
BT40-SLA40-160	40	80	160	M20*2	2
BT50-SLA06-63	6	25	63	M6	1
BT50-SLA08-63	8	28	63	M8	1
BT50-SLA10-63	10	35	63	M10	1
BT50-SLA12-80	12	42	80	M12	1
BT50-SLA14-80	14	44	80	M12	1
BT50-SLA16-80	16	48	80	M14	1
BT50-SLA18-80	18	50	80	M14	1
BT50-SLA20-80	20	52	80	M16	1
BT50-SLA25-100	25	65	100	M18*2	2
BT50-SLA32-105	32	72	105	M20*2	2
BT50-SLA40-110	40	80	110	M20*2	2
BT50-SLA50-125	50	98	125	M24*2	2

AD/B Customized

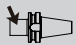
AD/B 可定制

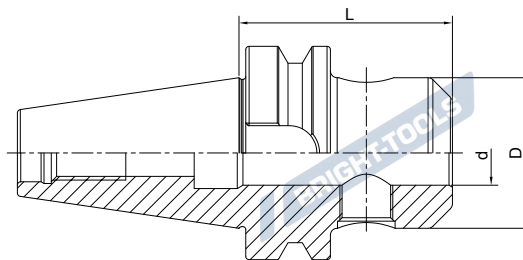
BT



## End Mill Holder Weldon 侧固刀柄



 DIN6359/1835B	 A $\nearrow$ $\leq 0.005$	 RPM G6.3/15000	 AD
--	---	--	---



Size	d	D	L	M	Screw Quantity
BT50-SLA06-160	6	25	160	M6	1
BT50-SLA08-160	8	28	160	M8	1
BT50-SLA10-160	10	35	160	M10	1
BT50-SLA12-160	12	42	160	M12	1
BT50-SLA14-160	14	44	160	M12	1
BT50-SLA16-160	16	48	160	M14	1
BT50-SLA18-160	18	50	160	M14	1
BT50-SLA20-160	20	52	160	M16	1
BT50-SLA25-160	25	65	160	M18*2	2
BT50-SLA32-160	32	72	160	M20*2	2
BT50-SLA40-160	40	80	160	M20*2	2
BT60-SLA25-100	25	65	100	M18*2	2
BT60-SLA32-105	32	72	105	M20*2	2
BT60-SLA40-110	40	80	110	M20*2	2
BT60-SLA50-125	50	98	125	M24*2	2

AD/B Customized

AD/B 可定制

BRIGHT-TOOLS

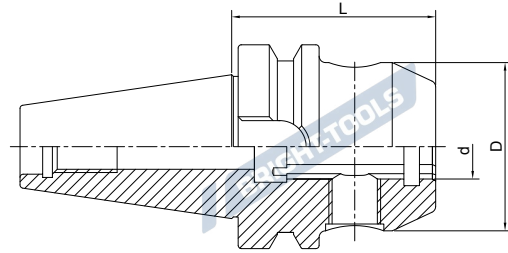
BRIGHT-TOOLS

BRIGHT-TOOLS

BRIGHT-TOOLS

**End Mill Holder with Coolant Channels**  
**侧固刀柄，端面出水型**

DIN6359/1835B	A $\nearrow$ ≤0.005	RPM G6.3/15000	AD
---------------	------------------------	-------------------	----







Size	d	D	L	M	Screw Quantity
BT40-SLA06-50K	6	25	50	M6	1
BT40-SLA08-50K	8	28	50	M8	1
BT40-SLA10-63K	10	35	63	M10	1
BT40-SLA12-63K	12	42	63	M12	1
BT40-SLA14-63K	14	44	63	M12	1
BT40-SLA16-63K	16	48	63	M14	1
BT40-SLA18-63K	18	50	63	M14	1
BT40-SLA20-63K	20	52	63	M16	1
BT40-SLA25-90K	25	65	90	M18*2	2
BT40-SLA32-100K	32	72	100	M20*2	2
BT40-SLA40-120K	40	80	120	M20*2	2
BT40-SLA06-100K	6	25	100	M6	1
BT40-SLA08-100K	8	28	100	M8	1
BT40-SLA10-100K	10	35	100	M10	1
BT40-SLA12-100K	12	42	100	M12	1
BT40-SLA14-100K	14	44	100	M12	1
BT40-SLA16-100K	16	48	100	M14	1
BT40-SLA18-100K	18	50	100	M14	1
BT40-SLA20-100K	20	52	100	M16	1

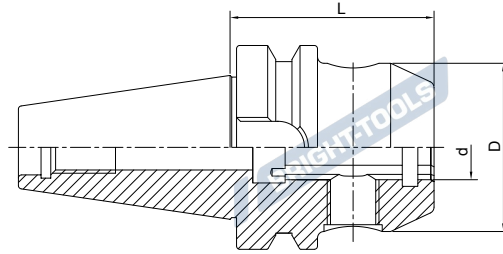
AD/B Customized

AD/B 可定制

BT

### End Mill Holder with Coolant Channels 侧固刀柄，端面出水型

 DIN6359/1835B	 A $\nearrow$ $\leq 0.005$	 RPM G6.3/15000	 AD
--	---	--	---



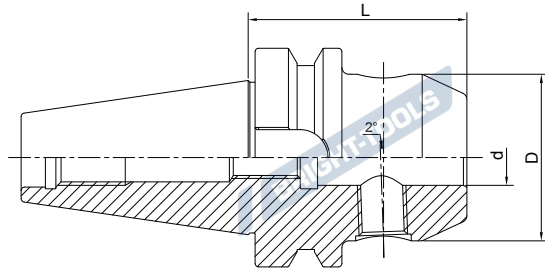
Size	d	D	L	M	Screw Quantity
BT50-SLA06-63K	6	25	63	M6	1
BT50-SLA08-63K	8	28	63	M8	1
BT50-SLA10-63K	10	35	63	M10	1
BT50-SLA12-80K	12	42	80	M12	1
BT50-SLA14-80K	14	44	80	M12	1
BT50-SLA16-80K	16	48	80	M14	1
BT50-SLA18-80K	18	50	80	M14	1
BT50-SLA20-80K	20	52	80	M16	1
BT50-SLA25-100K	25	65	100	M18*2	2
BT50-SLA32-105K	32	72	105	M20*2	2
BT50-SLA40-110K	40	80	110	M20*2	2
BT50-SLA06-100K	6	25	100	M6	1
BT50-SLA08-100K	8	28	100	M8	1
BT50-SLA10-100K	10	35	100	M10	1
BT50-SLA12-100K	12	42	100	M12	1
BT50-SLA14-100K	14	44	100	M12	1
BT50-SLA16-100K	16	48	100	M14	1
BT50-SLA18-100K	18	50	100	M14	1
BT50-SLA20-100K	20	52	100	M16	1

AD/B Customized

AD/B 可定制

**End Mill Holder Whistle Notch**  
**侧固式铣刀柄，斜 2 度**

DIN1835E	A $\leq 0.005$	RPM G6.3/15000	AD
----------	----------------	----------------	----



Size	d	D	L	M	Screw Quantity
BT40-SLB06-50	6	25	50	M6	1
BT40-SLB08-50	8	28	50	M8	1
BT40-SLB10-63	10	35	63	M10	1
BT40-SLB12-63	12	42	63	M12	1
BT40-SLB14-63	14	44	63	M12	1
BT40-SLB16-63	16	48	63	M14	1
BT40-SLB18-63	18	50	63	M14	1
BT40-SLB20-63	20	52	63	M16	1
BT40-SLB25-90	25	65	90	M18*2	2
BT40-SLB32-100	32	72	100	M20*2	2
BT40-SLB40-120	40	80	120	M20*2	2
BT50-SLB06-63	6	25	63	M6	1
BT50-SLB08-63	8	28	63	M8	1
BT50-SLB10-63	10	35	63	M10	1
BT50-SLB12-80	12	42	80	M12	1
BT50-SLB14-80	14	44	80	M12	1
BT50-SLB16-80	16	48	80	M14	1
BT50-SLB18-80	18	50	80	M14	1
BT50-SLB20-80	20	52	80	M16	1
BT50-SLB25-100	25	65	100	M18*2	2
BT50-SLB32-105	32	72	105	M20*2	2
BT50-SLB40-110	40	80	110	M20*2	2

AD/B Customized

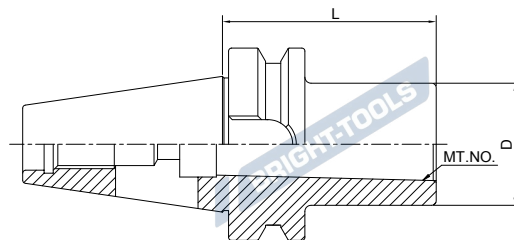
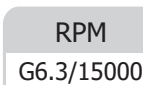
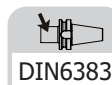
AD/B 可定制



BT

## Morse Taper Adapter with Tang

### 带扁尾莫氏刀柄



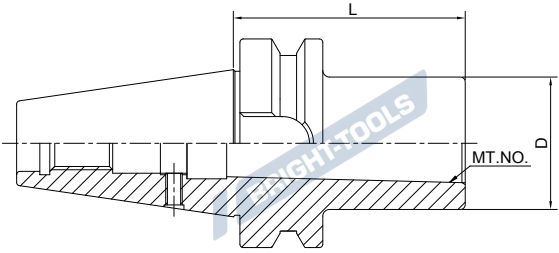
Size	MT.NO.	D	L
BT30-MTA1-45	1	25	45
BT30-MTA2-60	2	32	60
BT30-MTA3-75	3	40	75
BT40-MTA1-50	1	25	50
BT40-MTA2-50	2	32	50
BT40-MTA3-70	3	40	70
BT40-MTA4-95	4	48	95
BT50-MTA1-45	1	25	45
BT50-MTA2-60	2	32	60
BT50-MTA3-65	3	40	65
BT50-MTA3-180	3	40	180
BT50-MTA4-95	4	48	95
BT50-MTA4-180	4	48	180
BT50-MTA5-105	5	63	105
BT60-MTA3-65	3	40	65
BT60-MTA4-95	4	48	95
BT60-MTA5-105	5	63	105
BT60-MTA6-170	6	85	170

BRIGHT-TOOLS

BRIGHT-TOOLS

**Morse Taper Adapter with Drawbar**  
带螺纹孔莫氏刀柄

 DIN6364	 A $\leq 0.005$	RPM G6.3/15000
---	--	-------------------



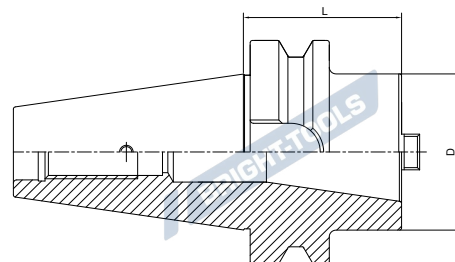
Size	MT.NO.	D	L
BT40-MTB1-50	1	25	50
BT40-MTB2-50	2	32	50
BT40-MTB3-70	3	40	70
BT40-MTB4-95	4	48	95
BT50-MTB1-45	1	25	45
BT50-MTB2-60	2	32	60
BT50-MTB3-65	3	40	65
BT50-MTB4-70	4	48	70
BT50-MTB5-120	5	63	120
BT60-MTB2-60	2	32	60
BT60-MTB3-65	3	40	65
BT60-MTB4-70	4	48	70
BT60-MTB5-120	5	63	120
BT60-MTB6-150	6	85	150

**BT**



### Tool Holder Adapter Sleeve 转换刀柄

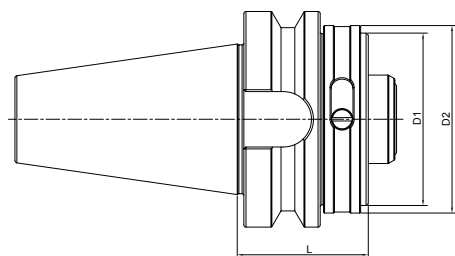
A ↗	RPM
≤0.005	G6.3/15000



Size	D	L
BT40-BT30-60	63	60
BT40-BT40-100	63	100
BT50-BT40-70	70	70
BT50-BT50-120	97	120

### Tool Holder Adapter Sleeve 转换刀柄

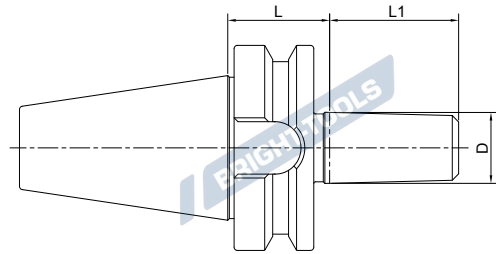
A ↗	AD
≤0.005	



Size	D1	D2	L
BT30-HSK32C-40	32	37	40
BT30-HSK40C-40	40	45	40
BT40-HSK32C-40	32	37	40
BT40-HSK40C-40	40	45	40
BT40-HSK50C-50	50	55	50
BT40-HSK63C-70	63	70	70
BT50-HSK32C-50	32	37	50
BT50-HSK40C-50	40	45	50
BT50-HSK50C-60	50	55	60
BT50-HSK63C-60	63	70	60
BT50-HSK80C-60	80	87	60
BT50-HSK100C-90	100	110	90

**Drill Chuck Adapter**  
**钻接杆**

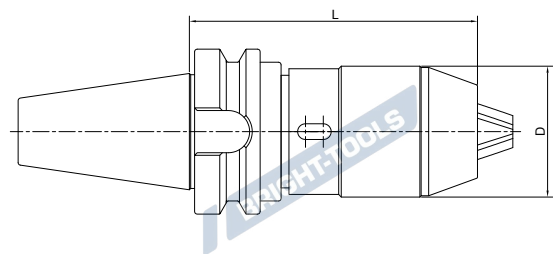
DIN238	A $\nearrow$ $\leq 0.005$	RPM G6.3/15000
--------	------------------------------	-------------------



Size	D	L	L1
BT30-B12-25	B12	25	18.5
BT30-B16-25	B16	25	24
BT40-B12-32	B12	32	18.5
BT40-B16-32	B16	32	24
BT40-B18-32	B18	32	32
BT40-B22-32	B22	32	40.5
BT50-B16-45	B16	45	24
BT50-B18-45	B18	45	32
BT50-B22-45	B22	45	40.5

**BT**

**APU Drill Chuck Holder**  
**APU 钻夹头刀柄**

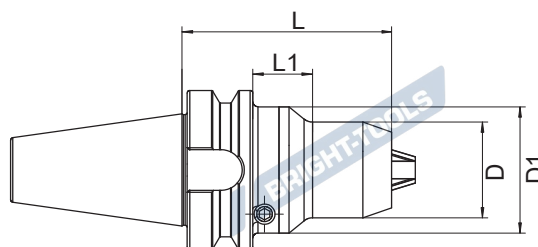


Size	D	L	Capacity
BT30-APU08-80	36	80	1-8
BT30-APU13-110	48	110	1-13
BT40-APU08-85	36	85	1-8
BT40-APU13-105	48	105	1-13
BT40-APU16-110	53	110	3-16
BT50-APU08-90	36	90	1-8
BT50-APU13-105	48	105	1-13
BT50-APU16-115	53	115	3-16

## Precision Drill Chuck Holder

### 精密钻夹头刀柄

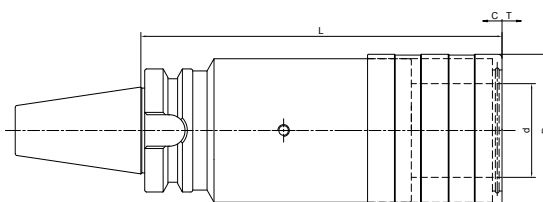
A ↗	RPM
≤0.03	G6.3/15000



Size	D	D1	L	L1	Capacity
BT30-CPU10-80	38	50	80	26	1-10
BT40-CPU10-80	38	50	80	21	1-10
BT40-CPU13-90	50	-	90	-	1-13
BT40-CPU16-90	50	-	90	-	1-16
BT50-CPU13-100	50	-	100	-	1-13
BT50-CPU16-100	50	-	100	-	1-16

## Quick Change Tapping Chuck with Length Compensation

### 弹性快换攻丝刀柄

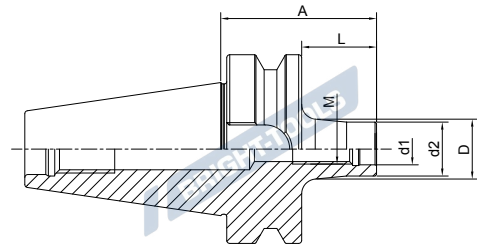


Size	d	D	L	T	C
BT30-TC312-70	19	38	70	7.5	7.5
BT30-TC820-95	31	54	95	12.5	12.5
BT40-TC312-65	19	38	65	7.5	7.5
BT40-TC820-93	31	53	93	12.5	12.5
BT40-TC1433-166	48	78	166	22	22
BT50-TC312-100	19	38	100	7.5	7.5
BT50-TC820-100	31	53	100	12.5	12.5
BT50-TC1433-142	48	78	142	22	22

**Screw-in Milling Cutter Holder**  
**锁牙刀柄, 锥柄型**



A ↗ ≤0.005	RPM G6.3/15000	AD
---------------	-------------------	----



Size	M	d1	d2	A	L	D
BT40-SOM08-52 L=25	8	8.5	14.5	52	25	15
BT40-SOM08-77 L=50	8	8.5	14.5	77	50	23
BT40-SOM08-102 L=75	8	8.5	14.5	102	75	23
BT40-SOM08-127 L=100	8	8.5	14.5	127	100	25
BT40-SOM10-32 L=5	10	10.5	18	32	5	18
BT40-SOM10-52 L=25	10	10.5	18	52	25	20
BT40-SOM10-77 L=50	10	10.5	18	77	50	23
BT40-SOM10-102 L=75	10	10.5	18	102	75	28
BT40-SOM10-127 L=100	10	10.5	18	127	100	32
BT40-SOM10-177 L=150	10	10.5	18	177	150	36.5
BT40-SOM12-32 L=5	12	12.5	21	32	5	21
BT40-SOM12-52 L=25	12	12.5	21	52	25	24
BT40-SOM12-77 L=50	12	12.5	21	77	50	24
BT40-SOM12-102 L=75	12	12.5	21	102	75	31
BT40-SOM12-127 L=100	12	12.5	21	127	100	31
BT40-SOM12-152 L=125	12	12.5	21	152	125	36
BT40-SOM12-177 L=150	12	12.5	21	177	150	38
BT40-SOM16-32 L=5	16	17	29	32	5	29
BT40-SOM16-52 L=25	16	17	29	52	25	29
BT40-SOM16-77 L=50	16	17	29	77	50	34
BT40-SOM16-102 L=75	16	17	29	102	75	34
BT40-SOM16-127 L=100	16	17	29	127	100	36
BT40-SOM16-152 L=125	16	17	29	152	125	40
BT40-SOM16-177 L=150	16	17	29	177	150	42.5
BT50-SOM08-88 L=50	8	8.5	14.5	88	50	23
BT50-SOM08-138 L=100	8	8.5	14.5	138	100	25
BT50-SOM08-188 L=150	8	8.5	14.5	188	150	30
BT50-SOM10-88 L=50	10	10.5	18	88	50	23
BT50-SOM10-138 L=100	10	10.5	18	138	100	32
BT50-SOM10-188 L=150	10	10.5	18	188	150	36.5

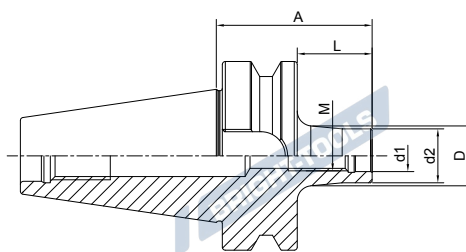
BT

## Screw-inMilling Cutter Holder

### 锁牙刀柄, 锥柄型



<b>A</b> ↗ ≤0.005	<b>RPM</b> G6.3/15000	<b>AD</b>
----------------------	--------------------------	-----------



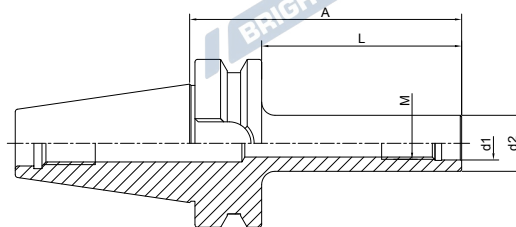
Size	M	d1	d2	A	L	D
BT50-SOM12-88 L=50	12	12.5	21	88	50	24
BT50-SOM12-138 L=100	12	12.5	21	138	100	33
BT50-SOM12-188 L=150	12	12.5	21	188	150	40
BT50-SOM16-88 L=50	16	17	29	88	50	34
BT50-SOM16-138 L=100	16	17	29	138	100	36
BT50-SOM16-188 L=150	16	17	29	188	150	42.5

## Screw-in Milling Cutter Holder

### 锁牙刀柄, 直柄型



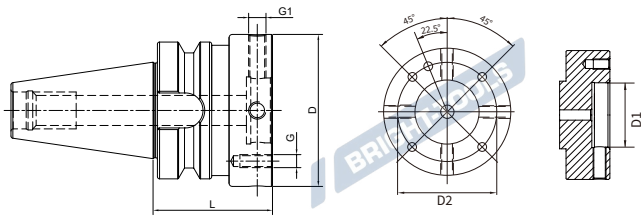
<b>A</b> ↗ ≤0.005	<b>RPM</b> G6.3/15000	<b>AD</b>
----------------------	--------------------------	-----------



Size	M	d1	d2	A	L
BT40-M10-102 L=75	10	10.5	18	102	75
BT40-M10-127 L=100	10	10.5	18	127	100
BT40-M10-177 L=150	10	10.5	18	177	150
BT40-M12-102 L=75	12	12.5	21	102	75
BT40-M12-127 L=100	12	12.5	21	127	100
BT40-M12-152 L=125	12	12.5	21	152	125
BT40-M12-177 L=150	12	12.5	21	177	150
BT40-M16-102 L=75	16	17	29	102	75
BT40-M16-127 L=100	16	17	29	127	100
BT40-M16-152 L=125	16	17	29	152	125
BT40-M16-177 L=150	16	17	29	177	150
BT50-M10-138 L=100	10	10.5	18	138	100
BT50-M10-188 L=150	10	10.5	18	188	150
BT50-M12-138 L=100	12	12.5	21	138	100
BT50-M12-188 L=150	12	12.5	21	188	150
BT50-M16-138 L=100	16	17	29	138	100
BT50-M16-188 L=150	16	17	29	188	150

**Runout Adjustable Flange Adapter**  
可调节精度法兰刀柄

A ↗ ≤0.002	RPM G2.5/25000	AD
---------------	-------------------	----



Size	D	D1	D2	L	G	G1
BT30-MOD060-050	60	30	44	50	M5	M8x1
BT30-MOD070-050	70	35	53	50	M6	M8x1
BT40-MOD060-050	60	30	44	50	M5	M8x1
BT40-MOD070-050	70	35	53	50	M6	M8x1
BT40-MOD080-050	80	40	63	50	M6	M8x1
BT40-MOD100-070	100	50	79	70	M8	M10x1
BT50-MOD060-070	60	30	44	70	M5	M8x1
BT50-MOD070-070	70	35	53	70	M6	M8x1
BT50-MOD080-070	80	40	63	70	M6	M8x1
BT50-MOD100-070	100	50	79	70	M8	M10x1
BT50-MOD117-080	117	60	96	80	M8	M10x1
BT50-MOD140-080	140	80	119	80	M10	M10x1

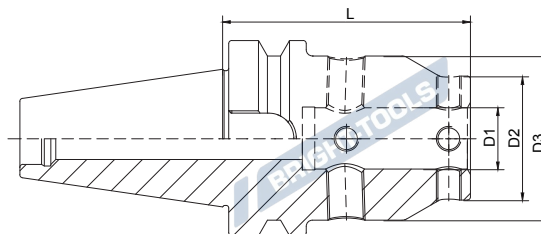
BT



## UM Adjustable Tool Holder

### UM 调零刀柄

A ↗ ≤0.003	RPM G2.5/25000	AD
---------------	-------------------	----



Size	D1	D2	D3	L
BT30-UM12-65	12	28	44.5	65
BT30-UM16-75	16	32	48	75
BT30-UM20-85	20	40	53	85
BT30-UM25-95	25	48	63	95
BT30-UM32-100	32	52	63	100
BT40-UM12-70	12	28	44.5	70
BT40-UM16-70	16	32	48	70
BT40-UM20-80	20	40	53	80
BT40-UM25-100	25	48	63	100
BT40-UM32-95	32	52	63	95
BT50-UM12-80	12	28	44.5	80
BT50-UM16-85	16	32	48	85
BT50-UM20-90	20	40	53	90
BT50-UM25-105	25	48	63	105
BT50-UM32-105	32	52	63	105

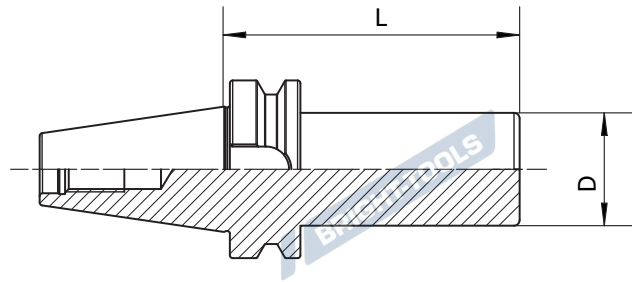
BRIGHT-TOOLS

BRIGHT-TOOLS

BRIGHT-TOOLS

BRIGHT-TOOLS

## Boring Bar Blank 基础柄



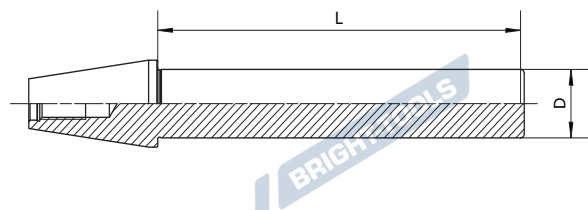
Size	D	L
BT30-D50-160	50	160
BT40-D63-160	63	160
BT40-D63-250	63	250
BT50-D100-160	100	160
BT50-D100-250	100	250



BT

## Test Arbor 主轴检测棒

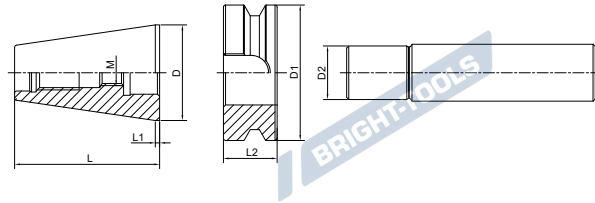
A ↗  
≤0.002



Size	D	L
BT30-32-300	32	300
BT40-40-300	40	300
BT50-50-300	50	300



## Alignment Tool for ATC Arm 调整机械手用组合模具



Size	D	D1	D2	L	L1	L2
BT30-ATC-18D	31.75	46	18	50.4	2	20
BT40-ATC-20D	44.45	63	20	67.4	2	25
BT50-ATC-28D	69.85	100	28	104.8	3	35

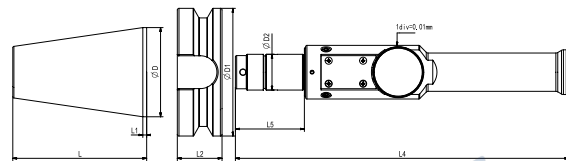
**Usage:**

- 1) Put the Taper to the machine Spindle
- 2) Install flange to the ATC arm
- 3) Insert Pin into the flange
- 4) Adjust ATC arm and make sure the pin front part into the flange completely.

**使用方法:**

- 1) 将锥度安装到机床主轴上
- 2) 将法兰安装到 ATC 臂上
- 3) 将销钉插入法兰中
- 4) 调整 ATC 臂并确保销钉前部完全进入法兰中。

## Alignment Tool for ATC Arm 调整机械手用组合模具



Size	D	D1	D2	L	L1	L2	L4	L5
BT30-ATC18	31.75	46	18	50.4	2	20	251	44
BT40-ATC20	44.45	63	20	67.4	2	25	251	44
BT50-ATC28	69.85	100	28	104.8	3	35	261	54

**Usage:**

1. Install the calibration taper to the machine spindle.
2. Install the calibration flange on the ATC machine.
3. Insert the calibration pin into the calibration flange.
4. Rotate the calibration pin to find the maximum and minimum positions of the pointer.  
value position of the pointer. This direction is the direction of eccentricity, and the amount of eccentricity is half of the difference.
5. Adjust the ATC manipulator and ensure that the front of the calibration pin is fully inserted into the flange.

**使用方法**

1. 将校正锥柄安装到机床主轴。
2. 将校正法兰安装在 ATC 机械手上。
3. 将校正销棒插入校正法兰。
4. 旋转校正销棒，找到指针的最大值位置和最小值位置。  
该方向即偏心方向，偏心量为差值的一半。
5. 调整 ATC 机械手并确保校正销棒前端完全插入法兰中。

BRIGHT-TOOLS

BRIGHT-TOOLS

# TOOL HOLDERS

# BBT

BRIGHT-TOOLS

BRIGHT-TOOLS

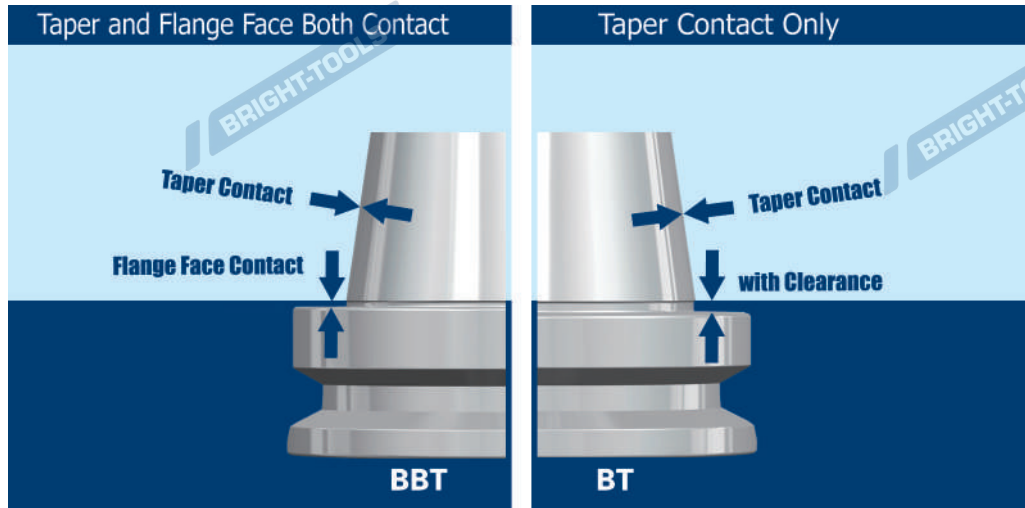
BRIGHT-TOOLS

BRIGHT-TOOLS

BRIGHT-TOOLS

BRIGHT-TOOLS

## BBT DualDrive (Double Contact) Tool Holders

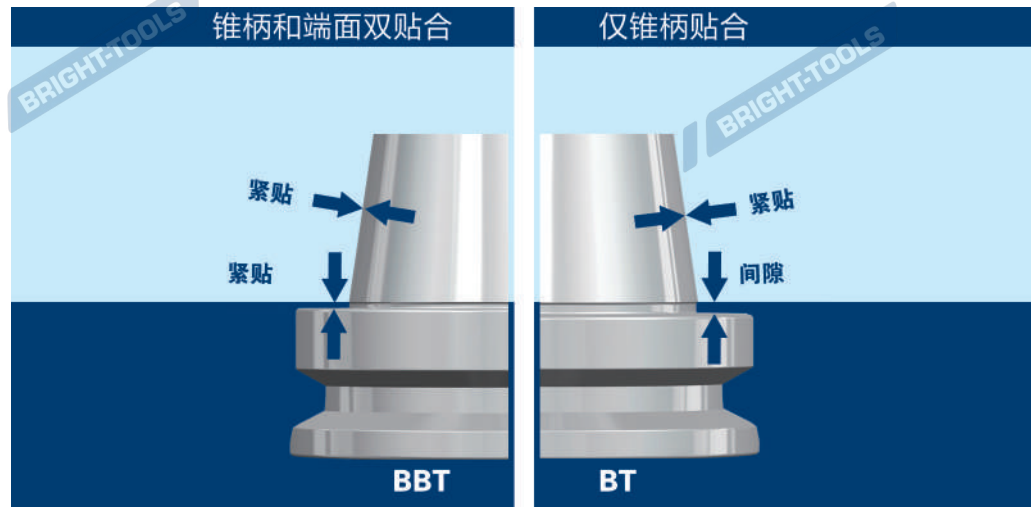


BBT Advantages:

- \* Improve tool holder stability when high speed working.
- \* Improve workpiece surface finish.
- \* Improve working dimension accuracy.
- \* Improve ATC repeatability.
- \* Improve the roundness when boring operation.
- \* Extend cutting tool life.

ORDER SPECIFICATION:  
PLEASE ORDER BBT SPINDLE FOR BETTER PERFORMANCE.

## BBT 双接触刀柄



使用 BBT 双接触刀柄优势：

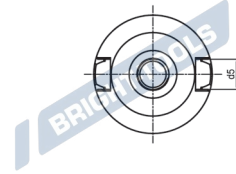
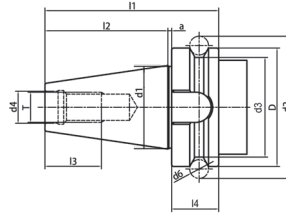
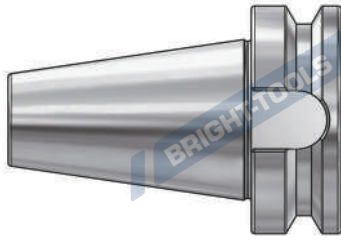
- \* 高速加工时提高刀柄稳定性；
- \* 提高工件表面光洁度；
- \* 提高加工精度；
- \* 提高 ATC 的重复精度；
- \* 提高镗孔加工圆度；
- \* 增加刀具使用寿命。

订购说明：

为了更好的使用效果，请订购带 BBT 主轴的加工中心。

## BBT Taper Standard

### BBT 锥柄标准



Size	D	d1	d2	d3	d4	d5	d6	l1	l2	l3	l4	a	T
BBT30	46	31.75	56.14	38	12.5	16.1	8	70.4	48.4	24	21	1	M12*1.75
BBT40	63	44.45	75.679	53	17	16.1	10	92.4	65.4	30	26	1	M16*2.0
BBT50	100	69.85	119.019	85	25	25.7	15	139.8	101.8	45	36.5	1.5	M24*3.0

**Taper standard:** JIS B 6339

**Material:** Alloyed case hardened steel

**Surface Treatment:** Blackening and Bright

**Taper tolerance:** <AT3

**Hardness:** HRC 56-60

**Carbon depth:** 0.8±0.2mm

**Surface Roughness:** Ra<0.2µm

**Balancing:** G6.3/15000; G2.5/25000

**Cooling:** AD; AD/B can be made by request.

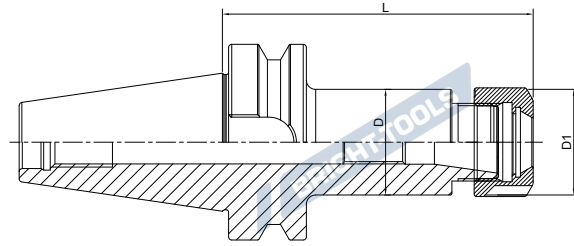
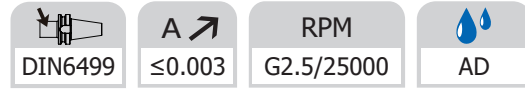
**BBT TOOLING SYSTEM****BBT 工具系统**

ER Collet Chuck.....	D.46
ER 弹簧夹头刀柄	
Power Milling Chuck .....	D.48
强力铣刀柄	
SKS Collet Chuck.....	D.50
SKS 高速筒夹刀柄	
Precision Screw Collet Chuck.....	D.51
NDC后拉刀柄	
Face Mill Holder.....	D.52
面铣刀柄	
Combi Shell Mill Holder.....	D.54
混合插入式铣刀柄	
End Mill Holder.....	D.56
侧固刀柄	
Morse Taper Adapter.....	D.56
带扁尾莫氏刀柄	
Tool Holder Adapter Sleeve .....	D.56
转换刀柄	
Precision Drill Chuck Holder.....	D.57
精密钻夹头刀柄	
Runout Adjustable Flange Adapter .....	D.57
可调节精度法兰刀柄	
Test Arbor.....	D.58
主轴检测棒	



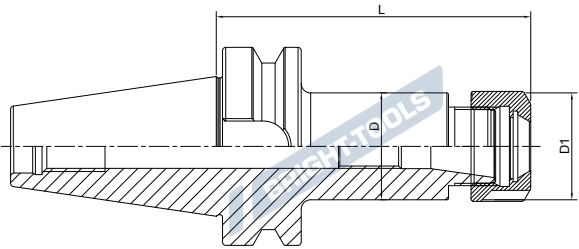
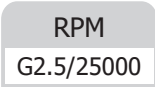
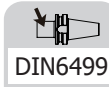
## ER Collet Chuck with UM Nut

### ER 弹簧夹头刀柄



Size	D	D1	L	Capacity
BBT40-ER16UM-70	28	32	70	1-10
BBT40-ER20UM-70	34	35	70	1-13
BBT40-ER25-70	42	42	70	2-16
BBT40-ER32-70	50	50	70	2-20
BBT40-ER40-80	50	63	80	3-26
BBT40-ER16UM-100	28	32	100	1-10
BBT40-ER20UM-100	34	35	100	1-13
BBT40-ER25-100	42	42	100	2-16
BBT40-ER32-100	50	50	100	2-20
BBT40-ER40-100	50	63	100	3-26
BBT40-ER16UM-160	28	32	160	1-10
BBT40-ER20UM-160	34	35	160	1-13
BBT40-ER25-160	42	42	160	2-16
BBT40-ER32-160	50	50	160	2-20
BBT40-ER40-160	50	63	160	3-26
BBT50-ER16UM-70	28	32	70	1-10
BBT50-ER20UM-70	34	35	70	1-13
BBT50-ER25-70	42	42	70	2-16
BBT50-ER32-70	40	50	70	2-20
BBT50-ER40-80	63	63	80	3-26
BBT50-ER50-100	64	78	100	6-34
BBT50-ER16UM-100	28	32	100	1-10
BBT50-ER20UM-100	34	35	100	1-13
BBT50-ER25-100	42	42	100	2-16
BBT50-ER32-100	50	50	100	2-20
BBT50-ER40-100	63	63	100	3-26
BBT50-ER16UM-160	28	32	160	1-10
BBT50-ER20UM-160	34	35	160	1-13
BBT50-ER25-160	42	42	160	2-16
BBT50-ER32-160	50	50	160	2-20
BBT50-ER40-160	63	63	160	3-26

**ER Collet Chuck with Hex Nut**  
**ER 弹簧夹头刀柄**



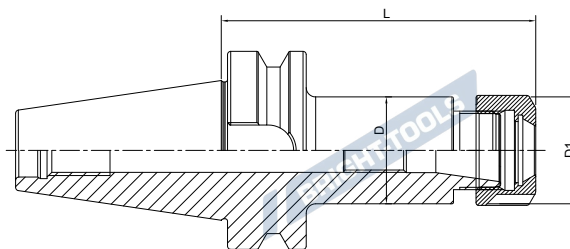
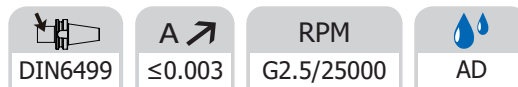
Size	D	D1	L	Capacity
BBT40-ER16-70	28	28	70	1-10
BBT40-ER20-70	34	34	70	1-13
BBT40-ER16-100	28	28	100	1-10
BBT40-ER20-100	34	34	100	1-13
BBT40-ER16-160	28	28	160	1-10
BBT40-ER20-160	34	34	160	1-13
BBT50-ER16-70	28	28	70	1-10
BBT50-ER20-70	34	34	70	1-13
BBT50-ER16-100	28	28	100	1-10
BBT50-ER20-100	34	34	100	1-13
BBT50-ER16-160	28	28	160	1-10
BBT50-ER20-160	34	34	160	1-13

**BBT**



## ER Collet Chuck with Mini Nut

### ER 弹簧夹头刀柄



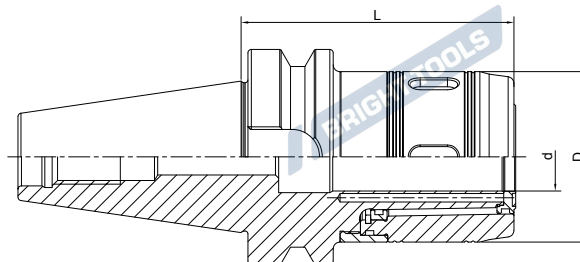
Size	D	D1	L	Capacity
BBT40-ER11M-70	16	16	70	1-7
BBT40-ER16M-70	22	22	70	1-10
BBT40-ER20M-70	28	28	70	1-13
BBT40-ER25M-70	35	35	70	2-16
BBT40-ER11M-100	16	16	100	1-7
BBT40-ER16M-100	22	22	100	1-10
BBT40-ER20M-100	28	28	100	1-13
BBT40-ER25M-100	35	35	100	2-16
BBT40-ER11M-160T	16	16	160	1-7
BBT40-ER16M-160T	22	22	160	1-10
BBT40-ER20M-160	28	28	160	1-13
BBT40-ER25M-160	35	35	160	2-16

T refers to cutter side with taper design

T 代表刀具端锥柄设计

## Power Milling Chuck

### 强力铣刀柄



Size	d	D	L	Capacity
BBT40-HC20-90	20	50	90	3-16; 20
BBT40-HC25-100	25	59	100	3-20; 25
BBT40-HC32-105	32	72	105	3-25; 32
BBT50-HC20-105	20	50	105	3-16; 20
BBT50-HC25-105	25	59	105	3-20; 25
BBT50-HC32-110	32	72	110	3-25; 32

**Power Milling Chuck**  
**强力铣刀柄**

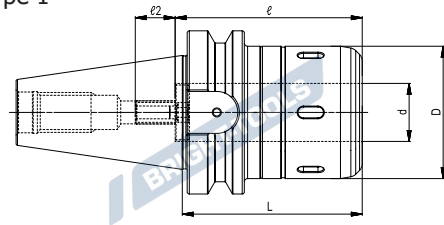
**NEW**

A ↗  
 ≤0.005

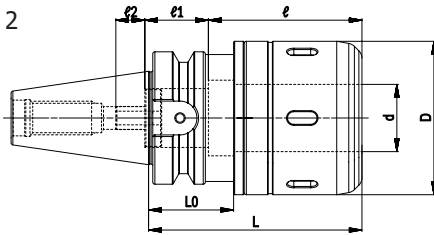
AD



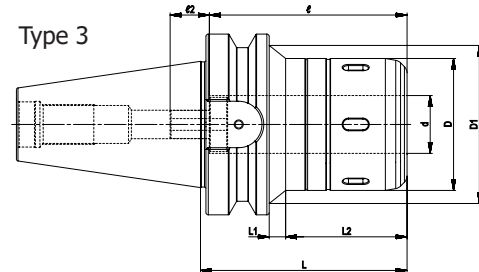
Type 1



Type 2



Type 3




Size	Type	d	D	D1	L	L1	L2	ℓ	ℓ1	ℓ2	d1	L0	G
BBT40-CT20SA-90	1	20	52	-	90	-	-	80	-	15	-	-	M12
BBT40-CT25SA-90	1	25	61	-	90	-	-	80	-	15	-	-	M12
BBT40-CT25SA-105	1	25	61	-	105	-	-	80	-	15	-	-	M12
BBT40-CT32SA-90	2	32	73	-	90	-	-	76	32	17	26	31	M18
BBT40-CT32SA-105	2	32	73	-	105	-	-	85	23	17	26	44	M18
BBT40-CT32SA-135	2	32	73	-	135	-	-	120	-	17	-	69	M18
BBT50-CT20SA-105	3	20	52	70	105	9	58	80	-	15	-	-	M12
BBT50-CT25SA-105	3	25	61	82	105	11	56	80	-	15	-	-	M12
BBT50-CT32SA-110	1	32	73	-	110	-	-	120	-	20	-	-	M18

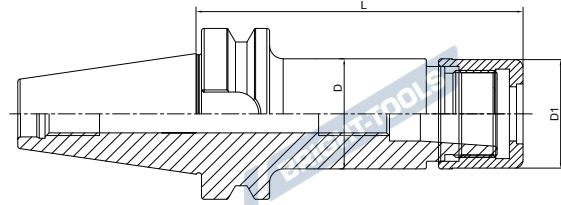


BRT

## High Speed SKS Collet Chuck

### SKS 高速筒夹刀柄

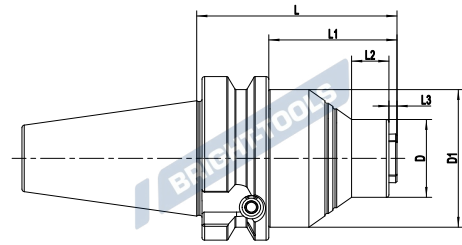
A ↗ ≤0.003	RPM G2.5/25000	 AD
---------------	-------------------	---



Size	D	D1	L	Capacity	M
BBT40-SKS10-90	27.5	27	90	2-10	M21.5*1
BBT40-SKS16-90	40.6	40	90	3-16	M32*1.5
BBT40-SKS20-90	48.5	48	90	2-20	M40*1
BBT40-SKS25-90	55.6	55	90	6-25	M45*1.5
BBT40-SKS10-120	27.5	27	120	2-10	M21.5*1
BBT40-SKS16-120	40.6	40	120	3-16	M32*1.5
BBT40-SKS20-120	48.5	48	120	2-20	M40*1
BBT40-SKS25-120	55.6	55	120	6-25	M45*1.5

**Precision Screw Collet Chuck**  
**NDC 后拉刀柄**

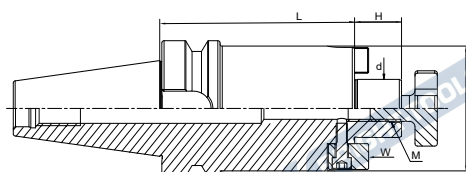
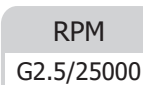
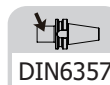
A ↗ ≤0.003	RPM G2.5/25000	AD
---------------	-------------------	----



Size	D	D1	L	L1	L2	L3
BBT30-NDC14-95	30	53	95	48	14	3
BBT30-NDC14-140	30	53	140	93	59	3
BBT30-NDC20-95	40	53	95	48	16	3
BBT40-NDC14-75	30	53	75	48	14	3
BBT40-NDC14-120	30	53	120	93	59	3
BBT40-NDC20-75	40	63	75	48	16	3
BBT40-NDC20-120	40	63	120	93	65	3
BBT40-NDC32-115	63	63	115	88	84.5	3.5
BBT50-NDC20-130	55	70	130	92	73	3
BBT50-NDC32-150	70	70	150	112	108.5	3.5



## Face Mill Holder 面铣刀柄

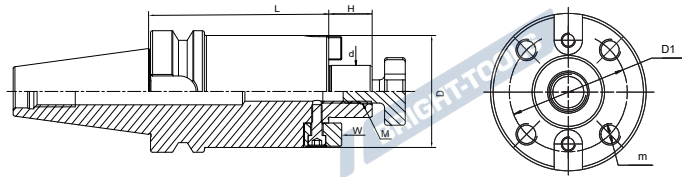


Size	d	L	D	H	M
BBT40-FMB16-40	16	40	38	17	M8
BBT40-FMB22-40	22	40	48	19	M10
BBT40-FMB27-40	27	40	58	21	M12
BBT40-FMB32-50	32	50	78	24	M16
BBT40-FMB22-60	22	60	48	19	M10
BBT40-FMB27-60	27	60	58	21	M12
BBT40-FMB32-60	32	60	78	24	M16
BBT40-FMB16-100	16	100	38	17	M8
BBT40-FMB22-100	22	100	48	19	M10
BBT40-FMB27-100	27	100	58	21	M12
BBT40-FMB32-100	32	100	78	24	M16
BBT50-FMB16-40	16	40	38	17	M8
BBT50-FMB22-40	22	40	48	19	M10
BBT50-FMB27-40	27	40	58	21	M12
BBT50-FMB32-50	32	50	78	24	M16
BBT50-FMB22-60	22	60	48	19	M10
BBT50-FMB27-60	27	60	58	21	M12
BBT50-FMB32-60	32	60	78	24	M16
BBT50-FMB16-100	16	100	38	17	M8
BBT50-FMB22-100	22	100	48	19	M10
BBT50-FMB27-100	27	100	58	21	M12
BBT50-FMB32-100	32	100	78	24	M16
BBT50-FMB22-160	22	160	48	19	M10
BBT50-FMB27-160	27	160	58	21	M12
BBT50-FMB32-160	32	160	78	24	M16

Face mill holder is with retaining screw (image 2) except China, it is with universal screw (image 1) in China.  
中国市场的铣刀柄标配圆头螺钉 (图 1), 其他国家标配十字花螺钉 (图 2).

**Face Mill Holder**  
面铣刀柄

DIN6357	A $\leq 0.005$	RPM G2.5/25000	AD
---------	----------------	----------------	----



Size	d	L	D	D1	H	M	m
BBT40-FMB40-50	40	50	88	66.7	27	M20	M12
BBT40-FMB40-100	40	100	88	66.7	27	M20	M12
BBT50-FMB40-50	40	50	88	66.7	27	M20	M12
BBT50-FMB40-100	40	100	88	66.7	27	M20	M12

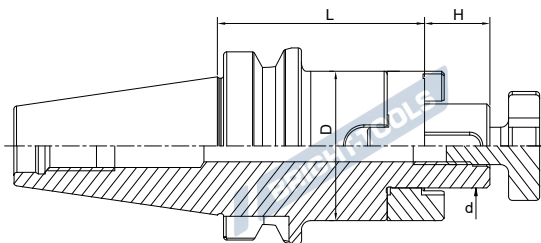
FMB40 tool holder is with one retaining screw (image 2) . but it is with one universal screw (image 1) in China.

FMB40 刀柄中国市场面铣刀柄标配圆头螺钉 (图 1)，其他国家标配十字花螺钉 (图 2).

**BRT**

## Combi Shell Mill Holder 混合插入式铣刀柄

 DIN6358	 ≤0.005	RPM G2.5/25000
--	---	-------------------

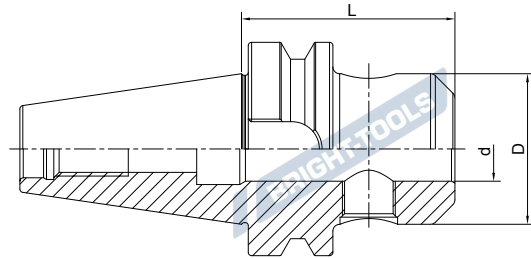


Size	d	D	H	L
BBT40-SEMC16-55	16	32	17	55
BBT40-SEMC22-55	22	40	19	55
BBT40-SEMC27-55	27	48	21	55
BBT40-SEMC32-60	32	58	24	60
BBT40-SEMC40-60	40	70	27	60
BBT40-SEMC16-100	16	32	17	100
BBT40-SEMC22-100	22	40	19	100
BBT40-SEMC27-100	27	48	21	100
BBT40-SEMC32-100	32	58	24	100
BBT40-SEMC40-100	40	70	27	100
BBT40-SEMC16-160	16	32	17	160
BBT40-SEMC22-160	22	40	19	160
BBT40-SEMC27-160	27	48	21	160
BBT40-SEMC32-160	32	58	24	160
BBT40-SEMC40-160	40	70	27	160
BBT50-SEMC16-70	16	32	17	70
BBT50-SEMC22-70	22	40	19	70
BBT50-SEMC27-70	27	48	21	70
BBT50-SEMC32-70	32	58	24	70
BBT50-SEMC40-70	40	70	27	70
BBT50-SEMC16-100	16	32	17	100
BBT50-SEMC22-100	22	40	19	100
BBT50-SEMC27-100	27	48	21	100
BBT50-SEMC32-100	32	58	24	100
BBT50-SEMC40-100	40	70	27	100
BBT50-SEMC16-160	16	32	17	160
BBT50-SEMC22-160	22	40	19	160
BBT50-SEMC27-160	27	48	21	160
BBT50-SEMC32-160	32	58	24	160
BBT50-SEMC40-160	40	70	27	160

**End Mill Holder Weldon**  
侧固刀柄



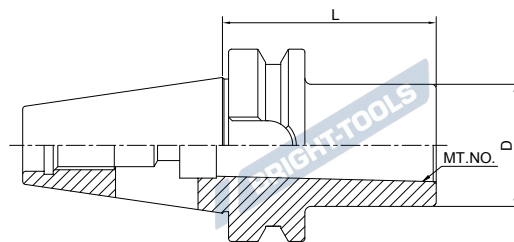
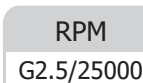
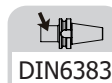
DIN6359/1835B	A $\nearrow$ $\leq 0.005$	RPM G2.5/25000	AD
---------------	------------------------------	-------------------	----



Size	d	D	L	M	Screw Quantity
BBT40-SLA06-50	6	25	50	M6	1
BBT40-SLA08-50	8	28	50	M8	1
BBT40-SLA10-63	10	35	63	M10	1
BBT40-SLA12-63	12	42	63	M12	1
BBT40-SLA14-63	14	44	63	M12	1
BBT40-SLA16-63	16	48	63	M14	1
BBT40-SLA18-63	18	50	63	M14	1
BBT40-SLA20-63	20	52	63	M16	1
BBT40-SLA25-90	25	65	90	M18*2	2
BBT40-SLA32-100	32	72	100	M20*2	2
BBT40-SLA40-120	40	80	120	M20*2	2
BBT40-SLA06-100	6	25	100	M6	1
BBT40-SLA08-100	8	28	100	M8	1
BBT40-SLA10-100	10	35	100	M10	1
BBT40-SLA12-100	12	42	100	M12	1
BBT40-SLA14-100	14	44	100	M12	1
BBT40-SLA16-100	16	48	100	M14	1
BBT40-SLA18-100	18	50	100	M14	1
BBT40-SLA20-100	20	52	100	M16	1
BBT50-SLA06-63	6	25	63	M6	1
BBT50-SLA08-63	8	28	63	M8	1
BBT50-SLA10-63	10	35	63	M10	1
BBT50-SLA12-80	12	42	80	M12	1
BBT50-SLA14-80	14	44	80	M12	1
BBT50-SLA16-80	16	48	80	M14	1
BBT50-SLA18-80	18	50	80	M14	1
BBT50-SLA20-80	20	52	80	M16	1
BBT50-SLA25-100	25	65	100	M18*2	2
BBT50-SLA32-105	32	72	105	M20*2	2
BBT50-SLA40-110	40	80	110	M20*2	2
BBT50-SLA50-125	50	98	125	M24*2	2

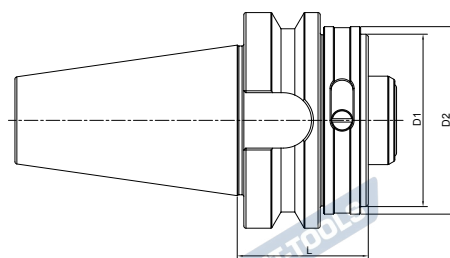
**BRT**

## Morse Taper Adapter with Tang 带扁尾莫氏刀柄



Size	MT.NO.	D	L
BBT40-MTA1-50	1	25	50
BBT40-MTA2-50	2	32	50
BBT40-MTA3-70	3	40	70
BBT40-MTA4-95	4	48	95
BBT50-MTA1-45	1	25	45
BBT50-MTA2-60	2	32	60
BBT50-MTA3-65	3	40	65
BBT50-MTA4-95	4	48	95

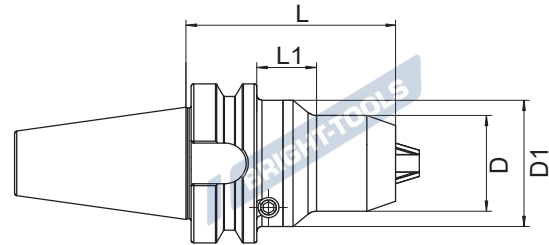
## Tool Holder Adapter Sleeve 转换刀柄



Size	D1	D2	L
BBT40-HSK63C-70	63	70	70
BBT50-HSK63C-60	63	70	60
BBT50-HSK100C-90	100	110	90

### Precision Drill Chuck Holder 精密钻夹头刀柄

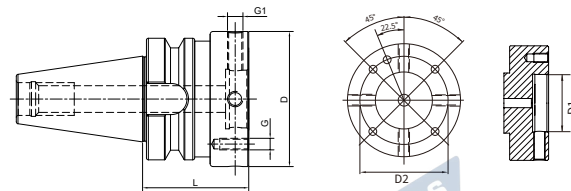
A ↗ ≤0.03	RPM G2.5/25000	AD
--------------	-------------------	----



Size	D	D1	L	L1	Capacity
BBT40-CPU10-80	38	50	80	21	1-10
BBT40-CPU13-90	50	-	90	-	1-13
BBT40-CPU16-90	50	-	90	-	1-16
BBT50-CPU13-100	50	-	100	-	1-13
BBT50-CPU16-100	50	-	100	-	1-16

### Runout Adjustable Flange Adapter 可调节精度法兰刀柄

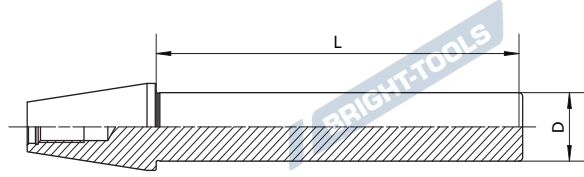
A ↗ ≤0.002	RPM G2.5/25000	AD
---------------	-------------------	----



Size	D	D1	D2	L	G	G1
BBT40-MOD060-050	60	30	44	50	M5	M8x1
BBT40-MOD070-050	70	35	53	50	M6	M8x1
BBT40-MOD080-050	80	40	63	50	M6	M8x1
BBT40-MOD100-070	100	50	79	70	M8	M10x1
BBT50-MOD060-070	60	30	44	70	M5	M8x1
BBT50-MOD070-070	70	35	53	70	M6	M8x1
BBT50-MOD080-070	80	40	63	70	M6	M8x1
BBT50-MOD100-070	100	50	79	70	M8	M10x1
BBT50-MOD117-080	117	60	96	80	M8	M10x1
BBT50-MOD140-080	140	80	119	80	M10	M10x1

BRT

## Test Arbor 主轴检测棒

 A ↗  
 $\leq 0.002$ 


Size	D	L
BBT30-32-300	32	300
BBT40-40-300	40	300
BBT50-50-300	50	300

BRIGHT-TOOLS

BRIGHT-TOOLS

BRIGHT-TOOLS

BRIGHT-TOOLS

BRIGHT-TOOLS

BRIGHT-TOOLS

BRIGHT-TOOLS

BRIGHT-TOOLS

# TOOL HOLDERS

# NBT

BRIGHT-TOOLS

BRIGHT-TOOLS

BRIGHT-TOOLS

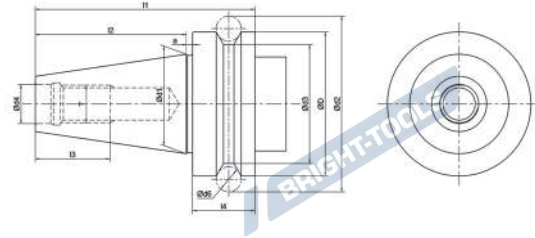
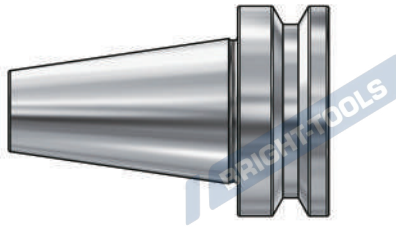
BRIGHT-TOOLS

BRIGHT-TOOLS

BRIGHT-TOOLS

## NBT Taper Standard

### NBT 锥柄标准



Size	D	d1	d2	d3	d4	d5	d6	l1	l2	l3	l4	a	T
NBT30	46	31.75	56.144	38	12.5	16.1	8	70.4	48.4	24	20	2	M12×1.75
NBT40	63	44.45	75.679	53	17	16.1	10	92.4	65.4	30	25	2	M16×2.0
NBT50	100	69.85	119.019	85	25	25.7	15	139.8	101.8	45	35	3	M24×3.0

**Material:** Alloyed case hardened steel  
**Surface Treatment:** Blackening and Bright  
**Taper tolerance:** <AT3  
**Hardness:** HRC 56-60  
**Carbon depth:** 0.8±0.2mm  
**Surface Roughness:** Ra<0.2µm  
**Balancing:** G2.5/25000  
**Cooling:** AD

BRIGHT-TOOLS

BRIGHT-TOOLS

BRIGHT-TOOLS

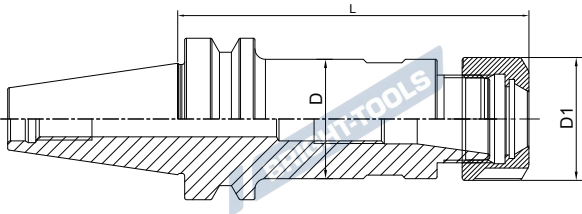
BRIGHT-TOOLS

BRIGHT-TOOLS

BRIGHT-TOOLS

**ER Collet Chuck**  
**ER 弹簧夹头刀柄**

DIN6499	A $\leq 0.003$	RPM G2.5/25000	AD
---------	----------------	----------------	----

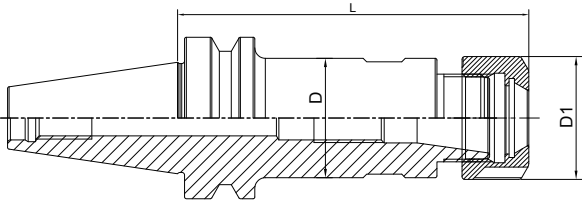


Size	D	D1	L	Capacity
NBT30-ER25-70	42	42	70	2-16
NBT30-ER32-70	50	50	70	2-20
NBT40-ER25-70	42	42	70	2-16
NBT40-ER32-70	50	50	70	2-20

**NBT**

**ER Collet Chuck**  
**ER 弹簧夹头刀柄**

DIN6499	A $\leq 0.003$	RPM G2.5/25000	AD
---------	----------------	----------------	----




Size	D	D1	L	Capacity
NBT30-ER16-60	28	28	60	1-10
NBT30-ER20-60	34	34	60	1-13
NBT40-ER16-70	28	28	70	1-10
NBT40-ER20-70	34	34	70	1-13

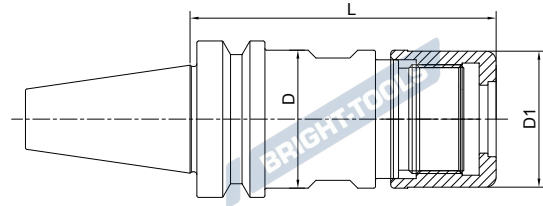
**BRIGHT-TOOLS**

**BRIGHT-TOOLS**

## High Speed SKS Collet Chuck

### SKS 高速筒夹刀柄

A ↗ ≤0.003	RPM G2.5/25000	 AD
---------------	-------------------	---



Size	D	D1	L	Capacity	M
NBT30-SKS10-60	27.5	27.1	60	3-10	M21.5*1.0
NBT30-SKS16-60	40.6	40	60	4-16	M32*1.5

